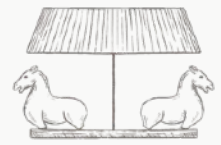


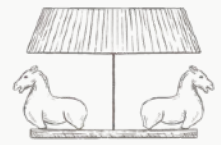
# WEETH HOME

*Water Mill*

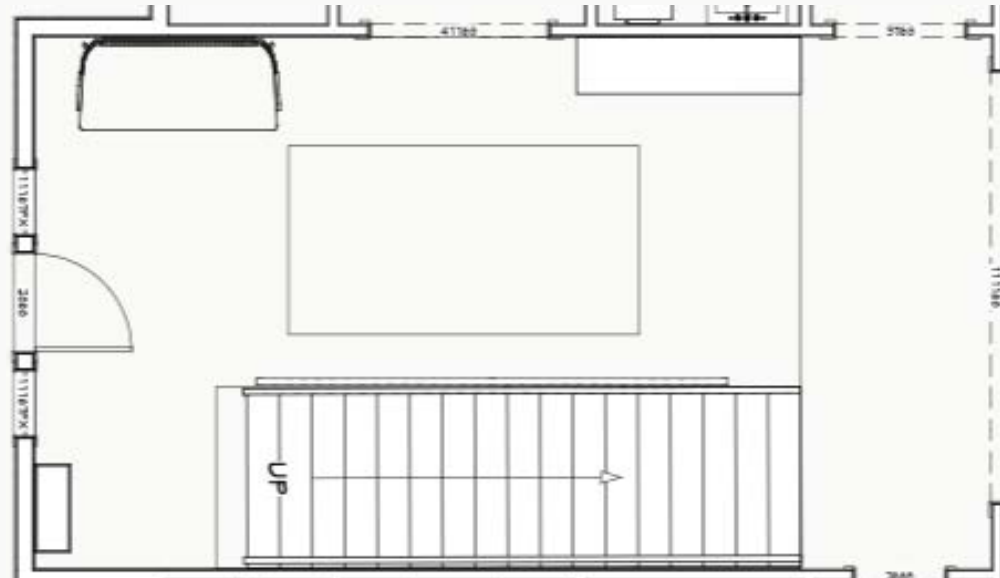
IVY PROPOSAL PRESENTATION



Graceful, Classic Style, grounded by East Coast meets Garden vibes

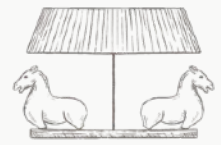


FLOORPLAN

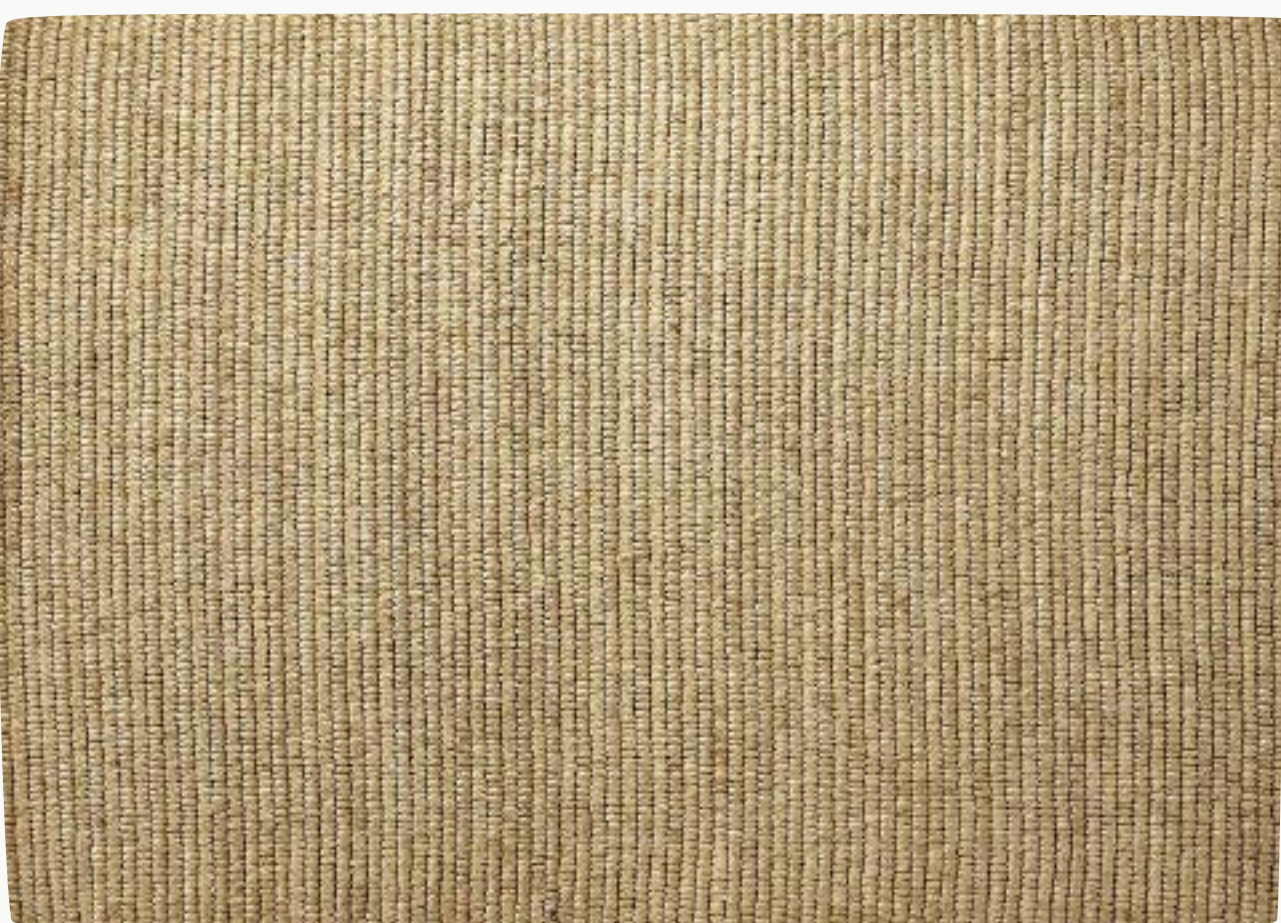


PAINTED CEILING TO ADD CONTRAST TO THE PRETTY WHITE MILLWORK

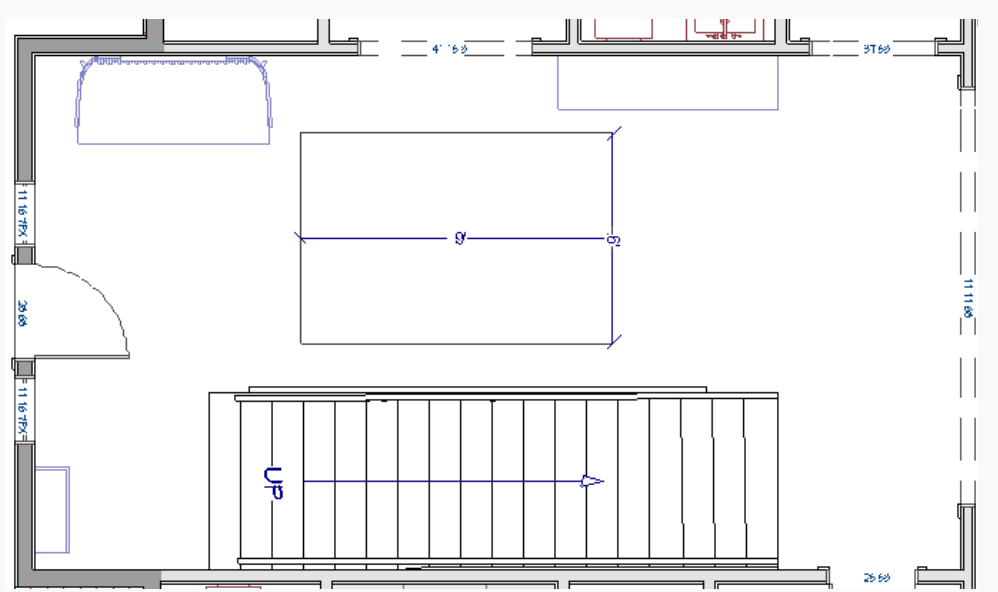
*BM Boothbay Gray*



Alternative Rug for cost Savings

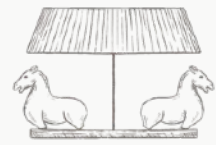


FLOORPLAN



PAINTED CEILING TO ADD CONTRAST TO THE PRETTY WHITE MILLWORK

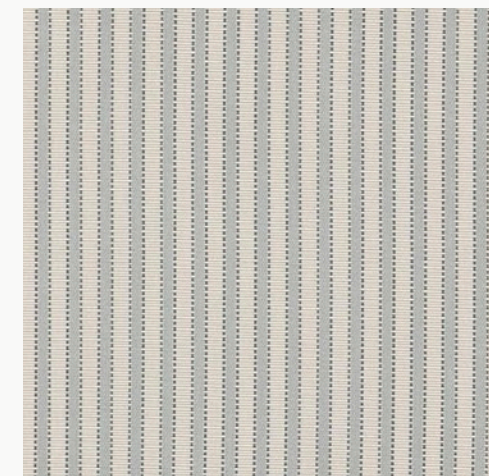
*BM Boothbay Gray*



SKIRTED BANQUETTE



Body Fabric Option 1



Bolsters

Floral Pattern Body with Contrast Stripe Bolster Pillows

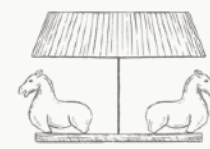
Application example of body fabric option 1



HICKORY WHITE SIDEBOARD



Custom Finished in Dove



VERDIGRIS DEMI-LUNE  
By Porta Romana



PLASTER TIERED SHADE CHANDELIER  
Custom 3 Tier Version of this Statement Fixture  
24 Lights, 44" Diameter, 43" H



SCULPTURAL CERAMIC LAMP  
Sculptural shape provides some tension



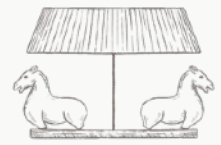
PAUL LANGE PHOTOGRAPH  
Like something white with soft color



IATESTA INTRICATE MIRROR



BRAIDED JUTE AREA RUG



Option 1: \$7936



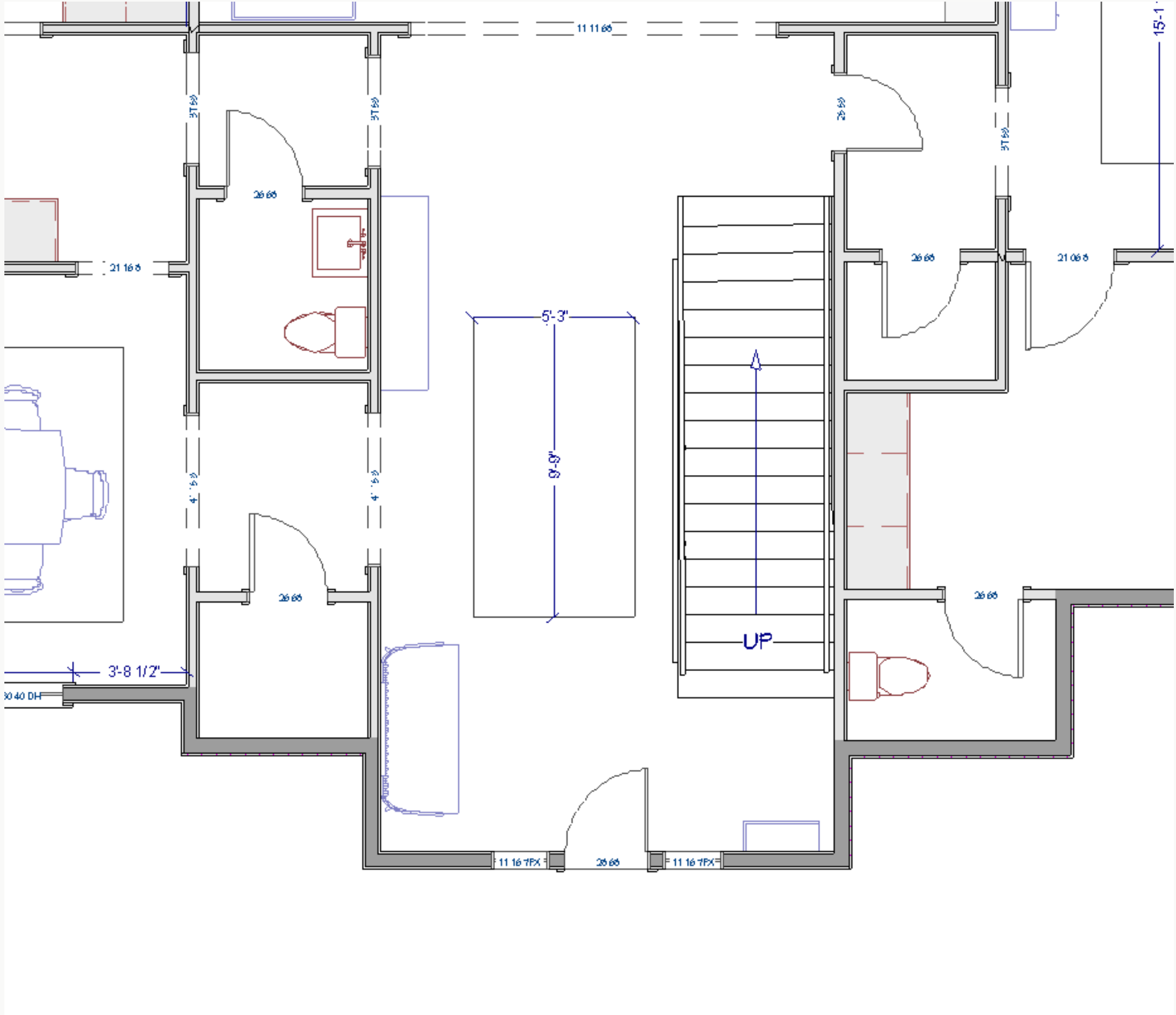
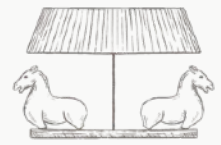
Patterson Flynn Matador Braided Abaca Area Rug 5' 3" x 9' 9"  
Designed by Patterson Flynn and can be made to a custom size

Option 2: \$1798

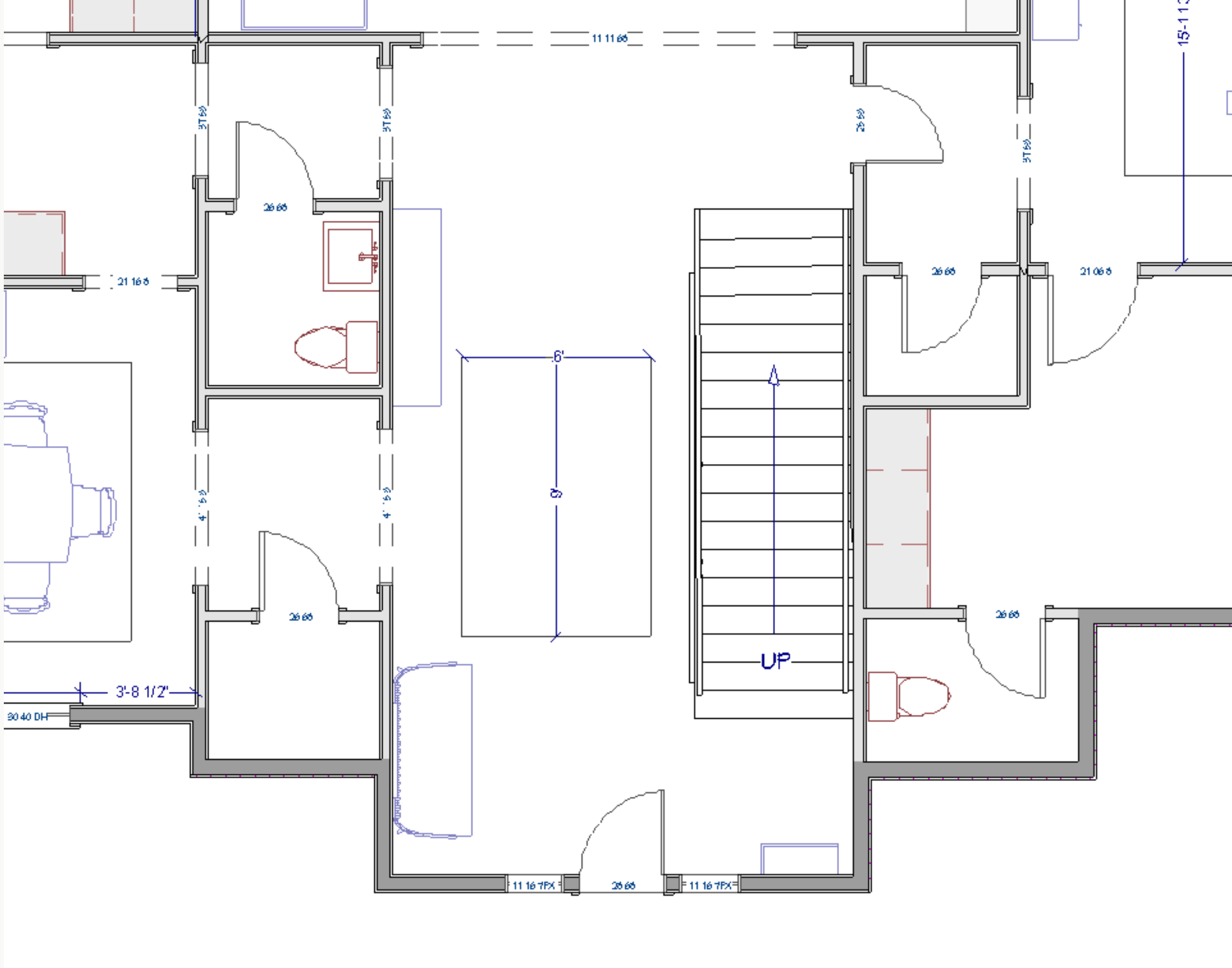


Braided Jute Area Rug 6x9  
Sold in standard sizes only

While we love the quality and construction of option 1,  
the details of option 2 are relatively the same

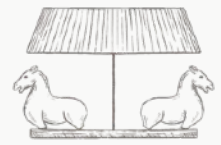


Option 1  
FLOOR PLAN



Option 2  
FLOOR PLAN

6x9



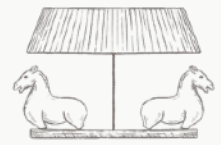
MOODY BLUE PAINTED DOOR

Like BM Providence Blue or Van Courtland Blue but will bring samples on Trade Day trip



STRIPED WOOL RUNNER

Brass Stair Rods



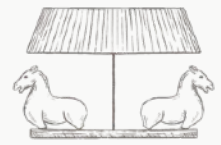
OPTION 1

Handwoven and designed by Elizabeth Eakins



OPTION 2

Hand Loomed 100% Wool  
This was presented as the back up option at our last site visit



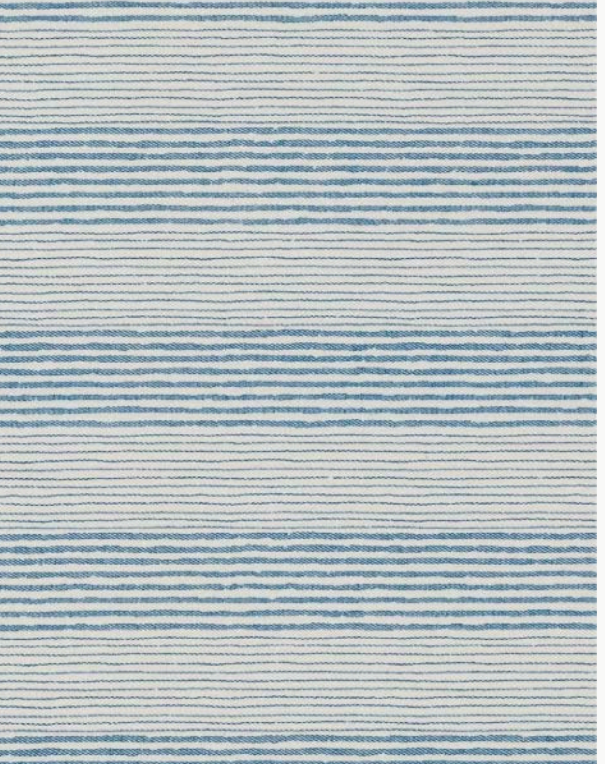
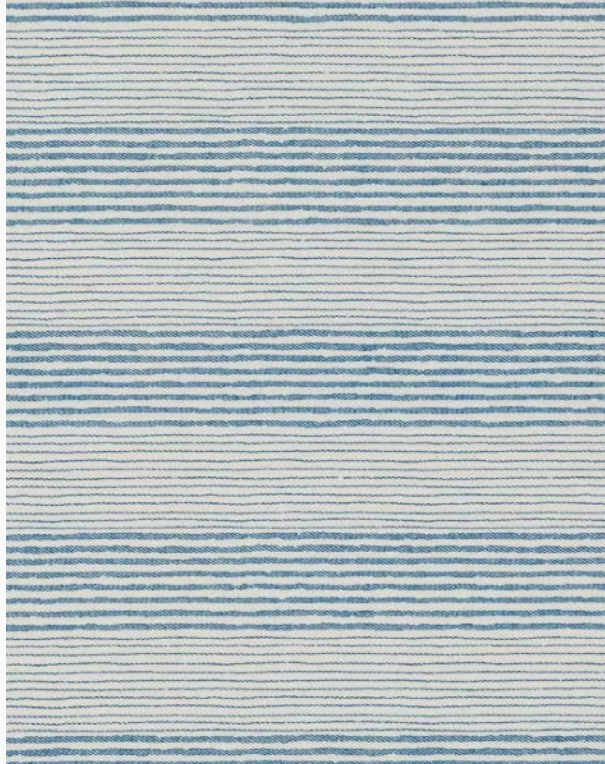
Reframe in Simple White Frame



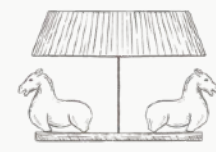
Brass Buffet Lamps

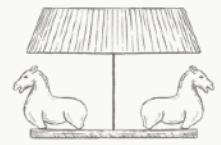


Finish: Antique Grey

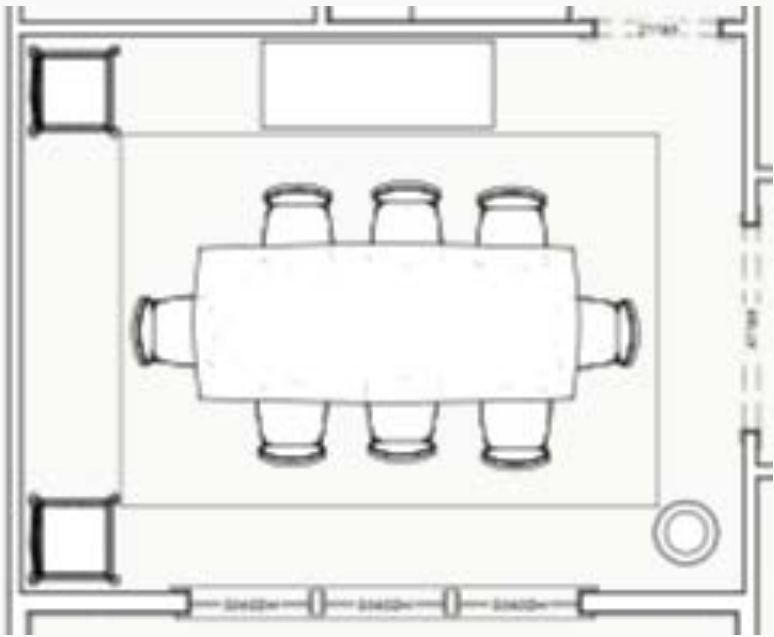


Blue Pattern Slipper Chairs

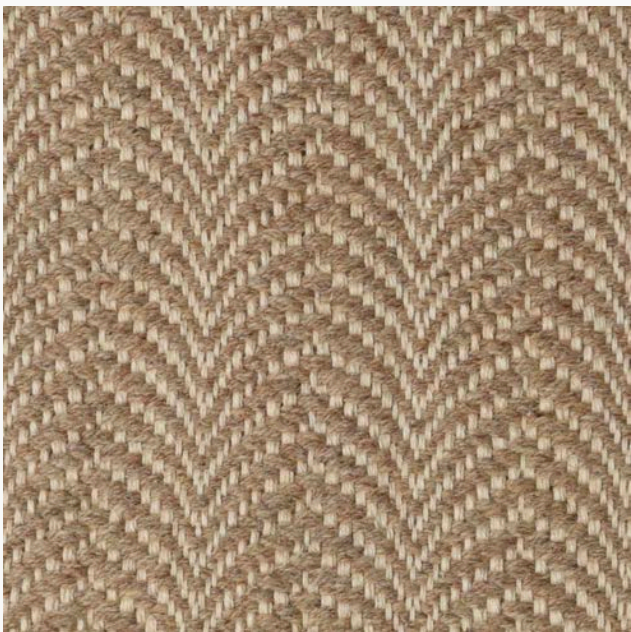




FLOORPLAN



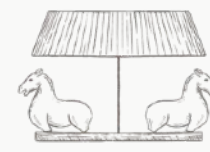
OVERALL ROOM SCHEME



Rug

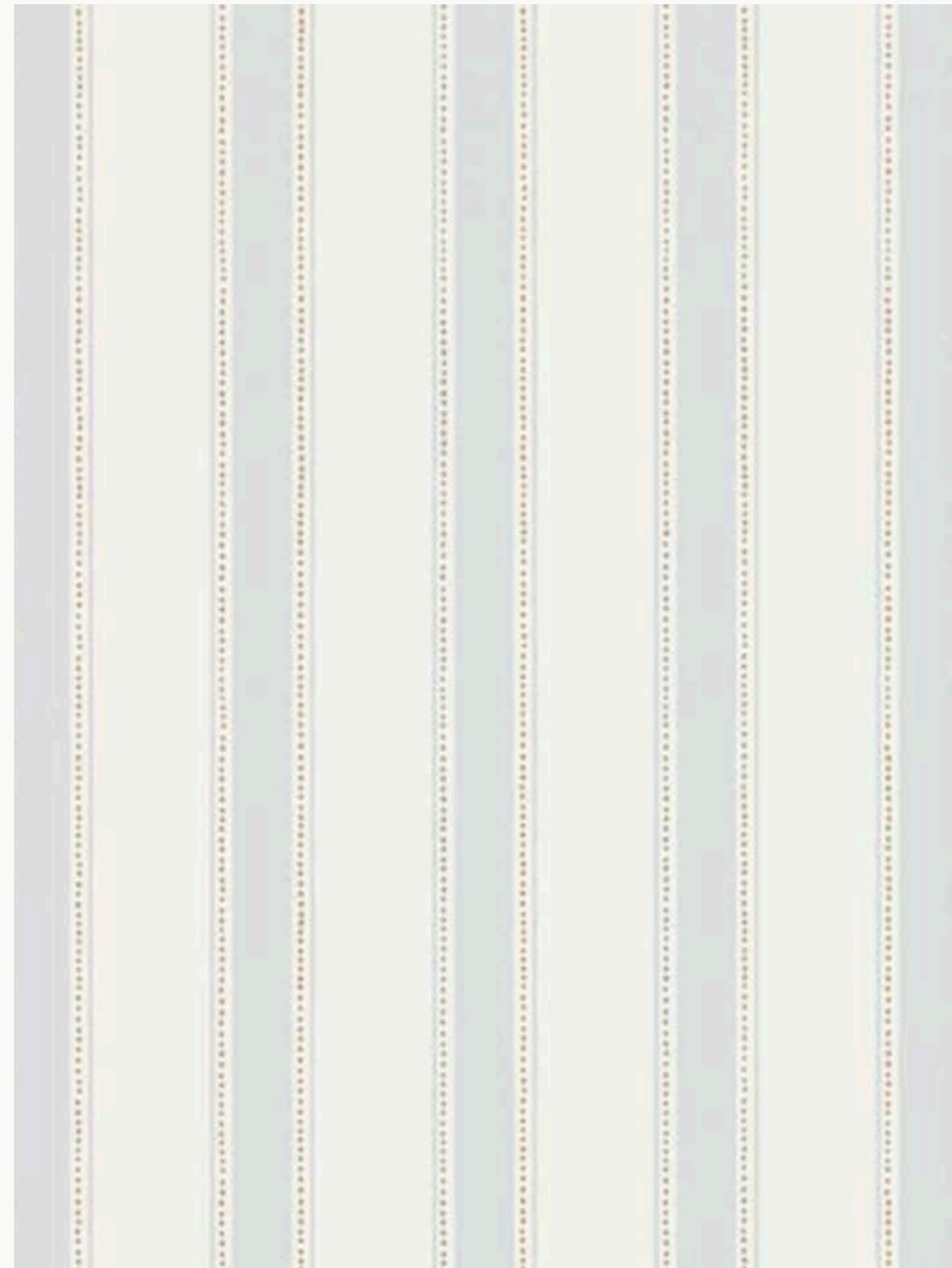


Drapes



GRACIE WALLPAPER

Immersive handpainted floral mural in Hampton Garden



STRIPED VESTIBULE WALLPAPER

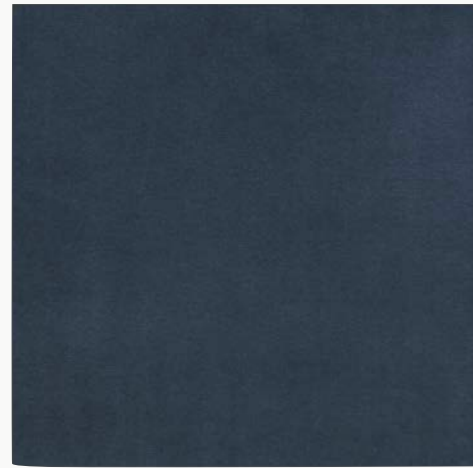
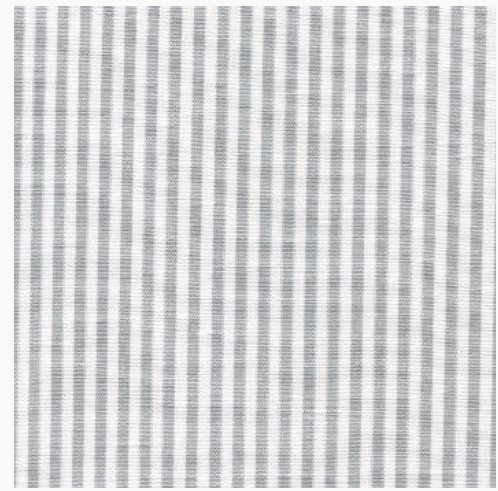
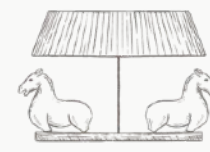
Scalamandre Soft Stripe



TRIMMED LINEN DRAPES

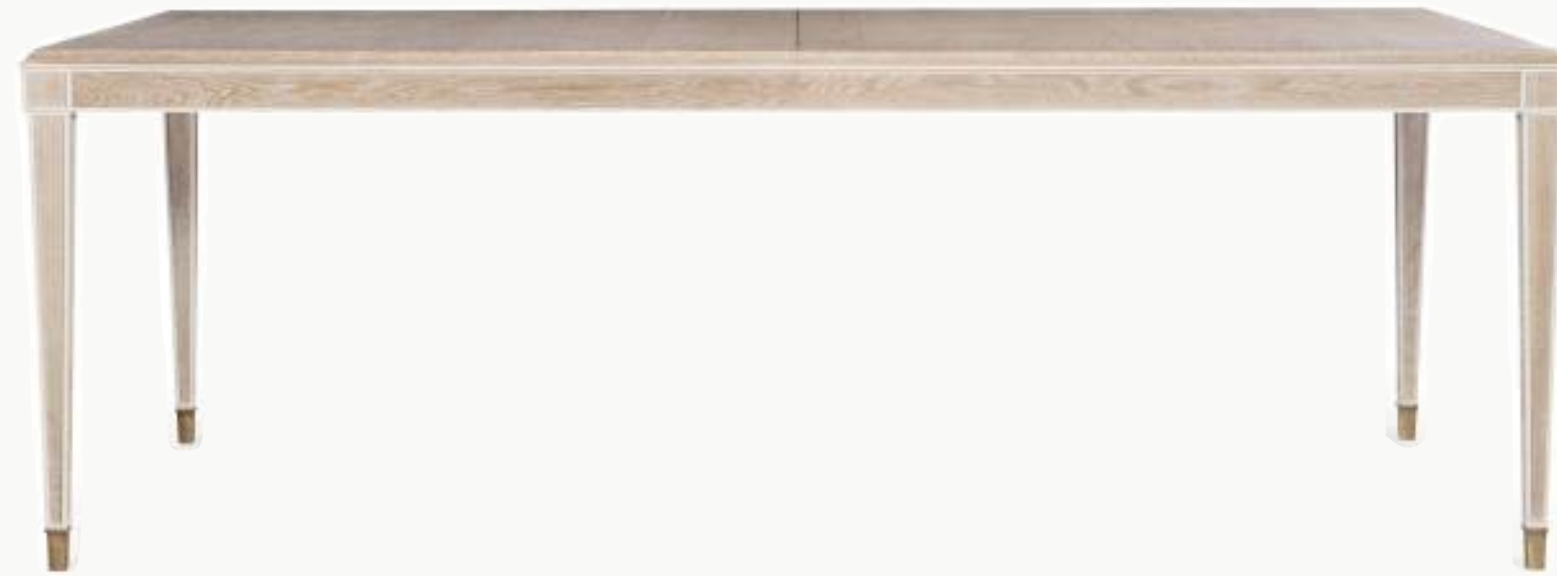
Ivory Linen Drapes with Schumacher Trim and blue top knot detail





EITHER EXISTING CHAIRS OR  
HICKORY CHAIR ROUND BACK

Dark Blue Velvet Seat  
Blue and White Stripe Back  
Constrast Stripe welt on  
seat



HIGHLAND HOUSE DINING TABLE

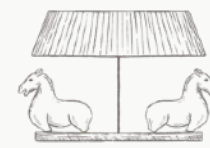
46"W x 112" with leaf (two more center legs  
when fully extended)  
(Current table 109")

Finish: Blonde Cerused with Brass Ferules



HICKORY CHAIR FLUTED SIDEBOARD

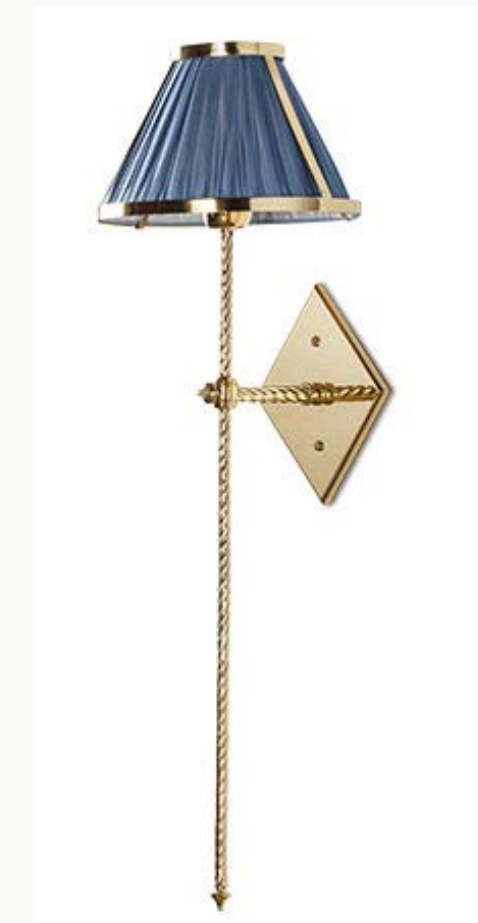
Brass hardware and marble top



EGG & DART ANTIQUED MIRROR  
38" W x 60" H



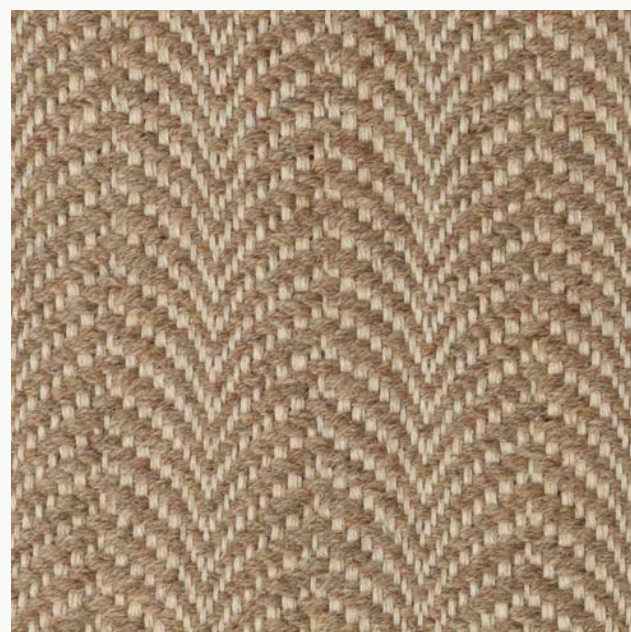
PLASTER FINISH FLUTED BOWL LIGHT  
36' D X 15" H



BRASS SCONCES  
Dark Blue Sheer Fabric Shade and Diamond Backplate



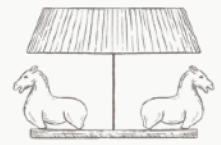
CUSTOM TABLE CLOTH  
Beautiful table cloth in Katie Leeds fabric with border detail



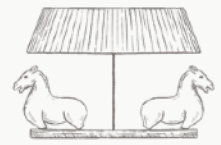
ARCHES WOOL CUSTOM SIZE RUG  
9 x 13



WHITE OAK PEDESTAL



# DINING ROOM COST SAVINGS OPTIONS



\$4559

OPTION 1

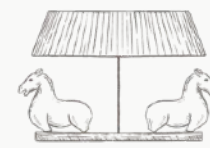
The Classic Paris Sconce made by hand by high end line Iatesta  
It's really the details of the rope look of the arm and the brass rim on the shade



\$789

OPTION 2

A more economical but comparable option with a shorter tail.  
We would have the shade custom made in a similar navy fabric to Option 1



OPTION 1: \$18,151

Plaster pendant hand made by sculptor and painter Steven Antonson  
36"



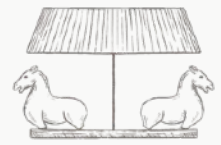
OPTION 2: \$3250

Petal Beaded Chandelier  
Good scale at 38"  
Beaded detail so emits a soft glow



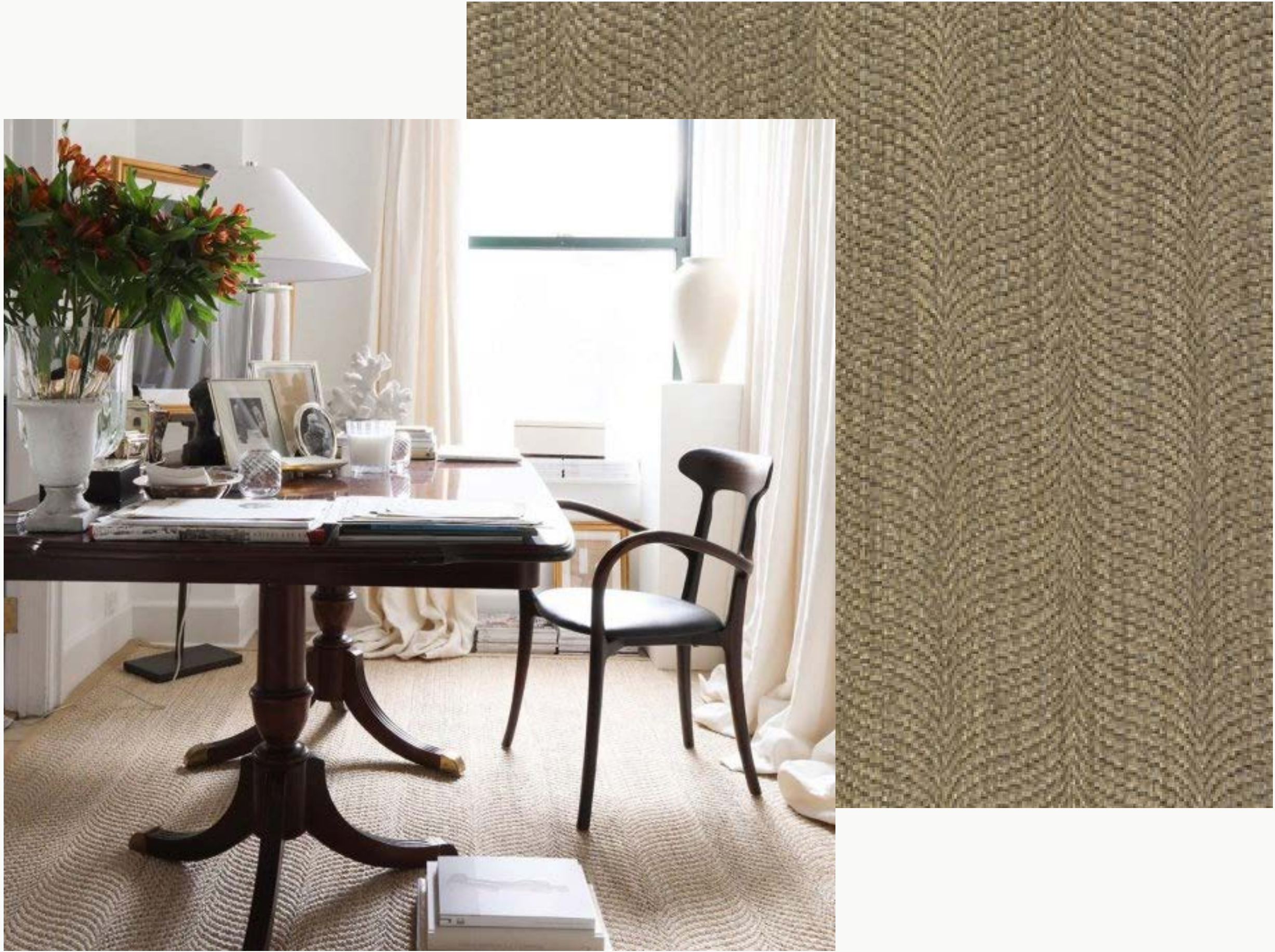
OPTION 3: \$3,100

Plaster pendant in undulating shell form  
Smaller scale at 29"



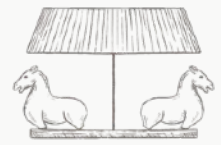
OPTION 1: \$13,620

Sample we reviewed together. Handwoven and designed by Elizabeth Eakins  
Linen and wool weave, soft and durable



OPTION 2 : \$1845

Machine made but a comparable option aesthetically for the dining  
room. This is made of sisal so not as soft



Option 1 : \$5538

Antiqued Mirror with wooden egg and dart frame hand  
made by high end line, latesta  
60”H x 38”W

For Scale

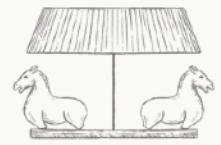


Option 2 : \$1395

19th Century French patina'ed carved wood mirror  
52” x 32”

For Scale

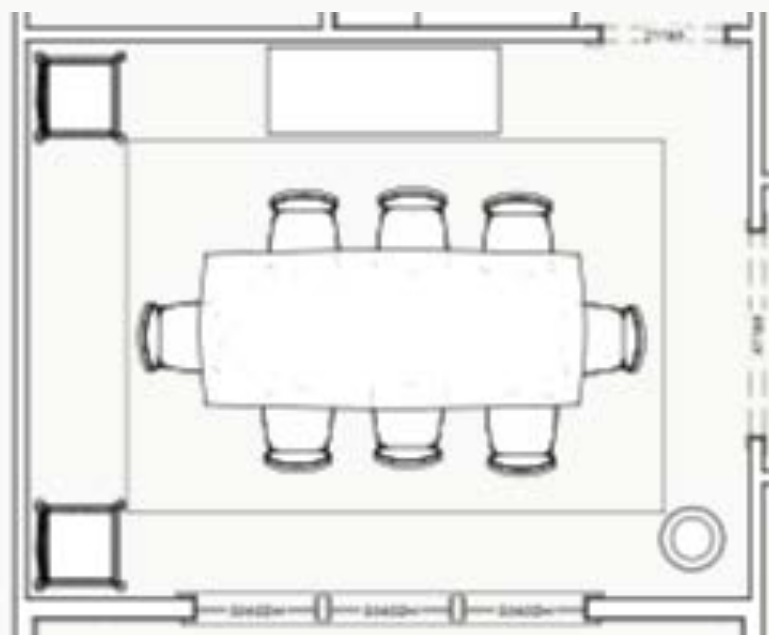




Cost Savings Options in Room Scheme



FLOORPLAN



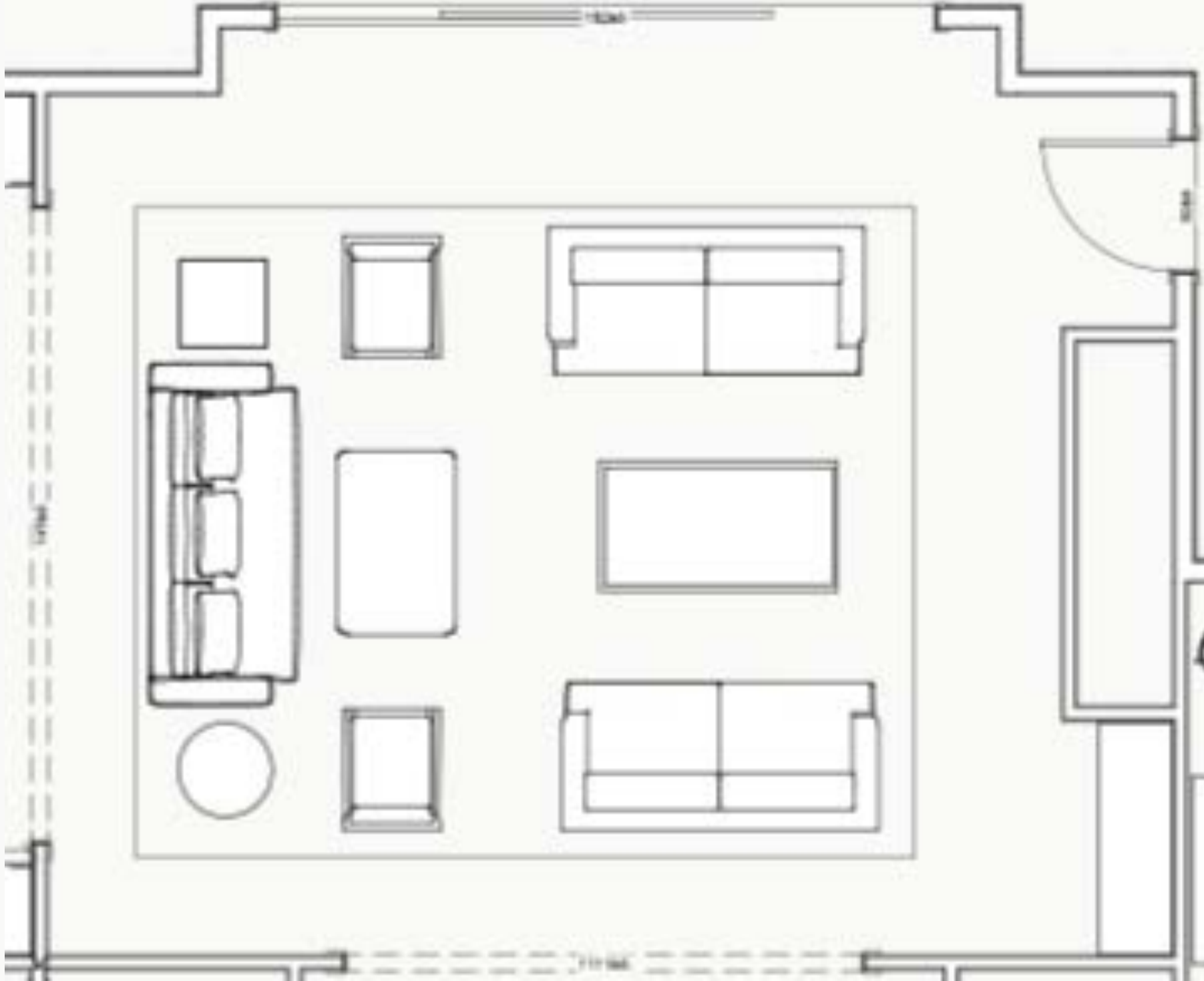
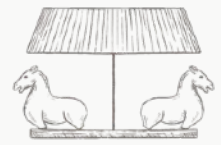
OVERALL ROOM SCHEME



Rug



Drapes

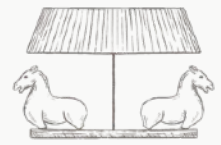


INSPIRATION IMAGE

Palette of Soft blues, two seating groupings and sandy wool rug to ground everything

FLOORPLAN

15 x 18 Rug

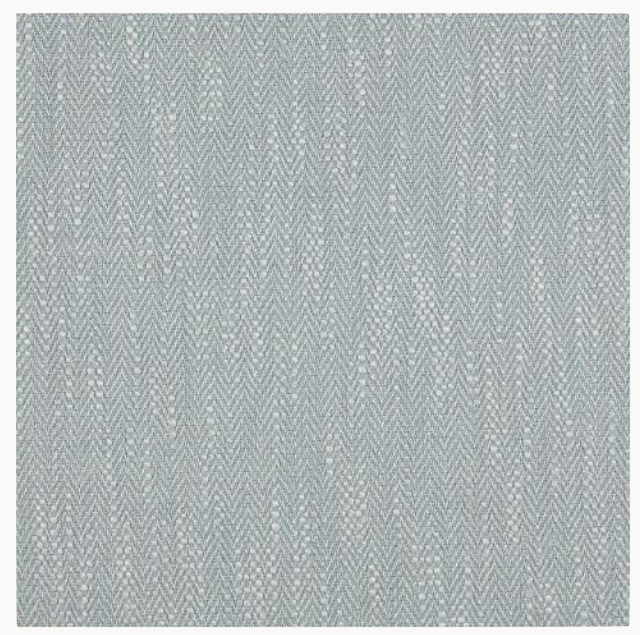


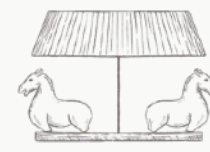
RUG



Wool Blend  
Herringbone in  
Sand

FABRICS





RUSH COFFEE TABLE



IRON SIDE TABLE



ETCHED WHITE CERAMIC LAMP



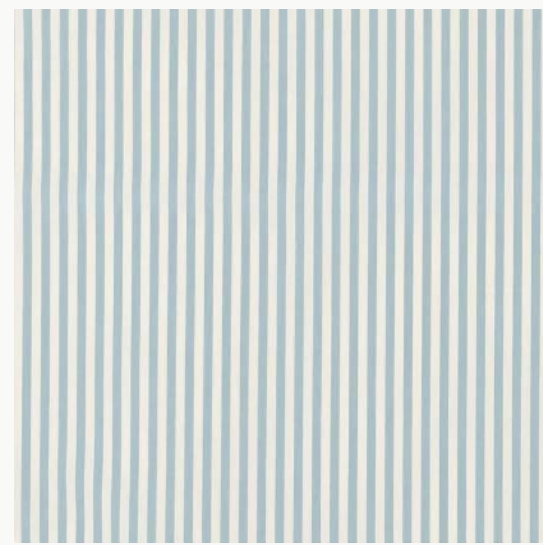
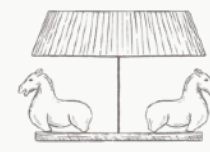
USE EXISTING FLOOR LAMP



WHITE WOOD SIDE TABLE  
WITH CASTORS

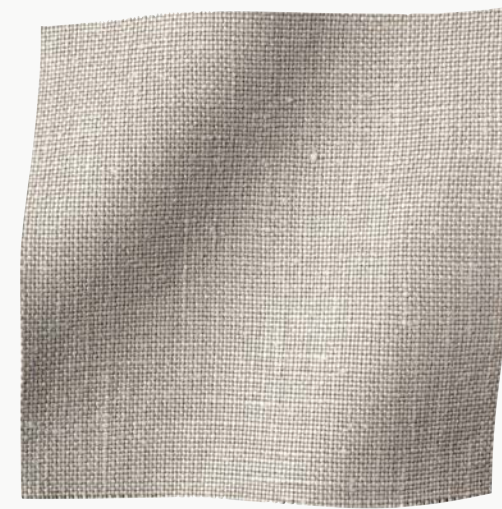


IRON CONSOLE



CASA GUSTO

Contrast Fabric Chairs



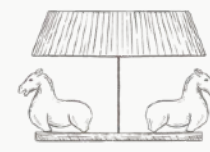
CASSANDRA SOFA

88" Long, Bench Seat

Drapey, Chunky Body Fabric and Blue Tape  
Like the idea of a deep olive pillow to add  
some tension and contrast, need a deeper  
color to add dimension



FRINGED OTTOMAN



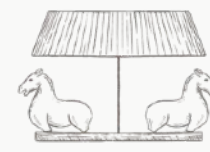
STRIPED WALLPAPER  
Scalamandre Gustav Wallpaper



SOFT FOG LINEN  
WALLPAPER ON CABINET  
FACES



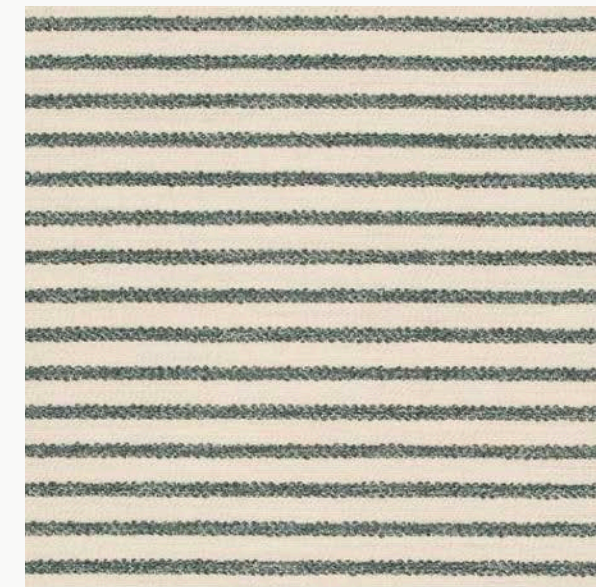
BRASS HARDWARE



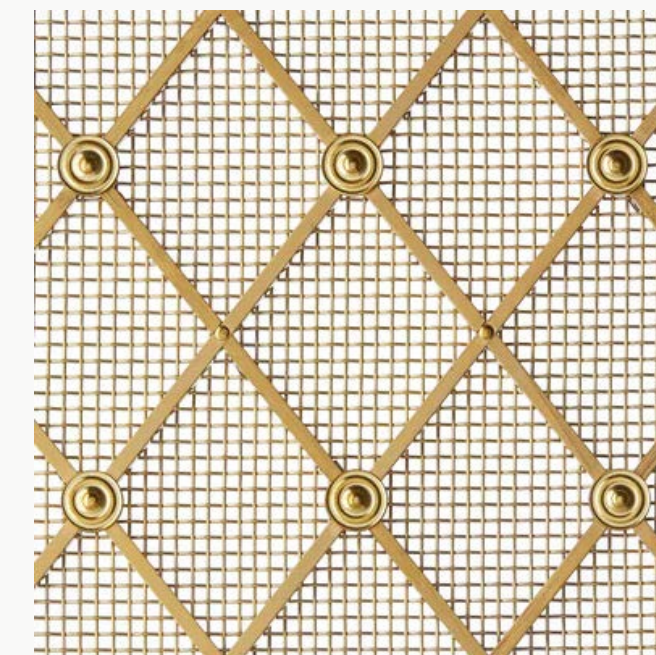
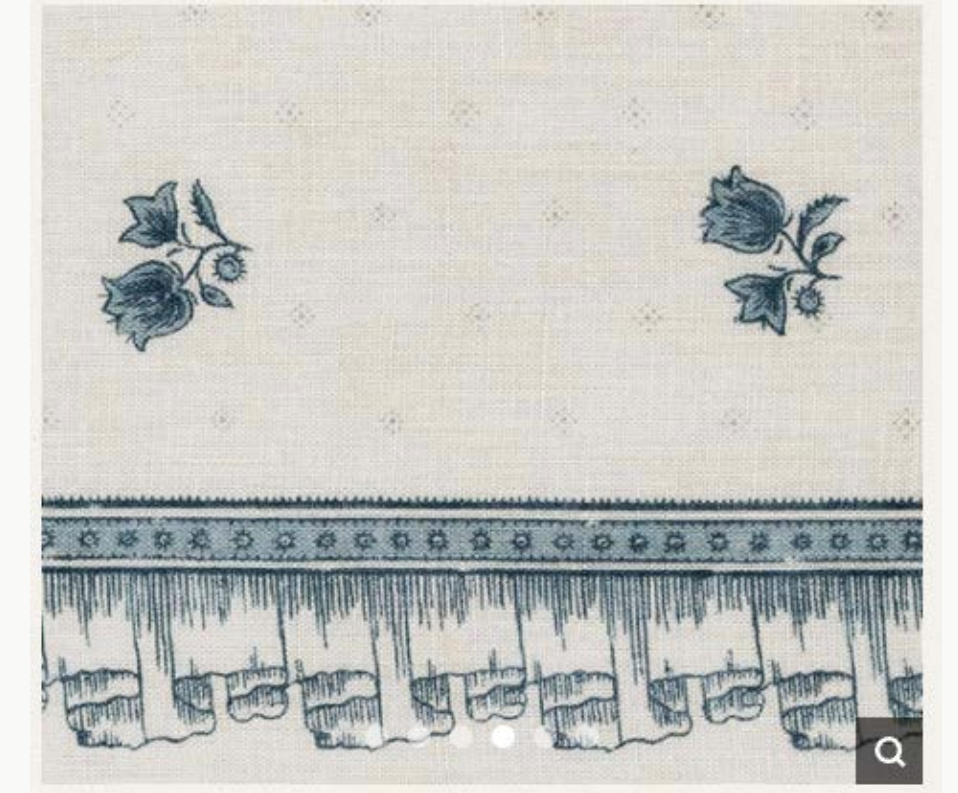
PRINTED FABRIC PENDANTS



WOVEN AND WHITE COUNTER STOOLS

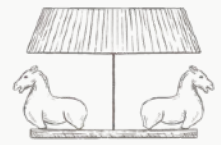


Performance Stripe Seats



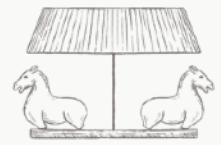
CAFE CURTAIN AND HARDWARE

Brass grilles and unlaquered brass cabinetry hardware



---

# KITCHEN COST SAVINGS OPTIONS



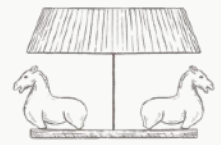
OPTION 1: \$16,146

Custom Brass Pleated Pendants with brass button detail  
We are able to use the custom fabric we proposed originally.



OPTION 2: \$2799

Designed by Visual Comfort.  
Fabric shown is the standard, no customization is possible.



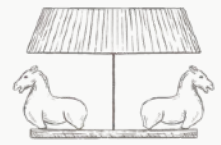
OPTION 1: \$5034

The original quintessential rattan basket counter stool  
Designed by British fine furniture and fabric maker, Soane Britain.

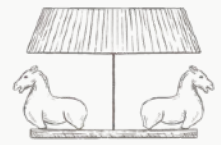


OPTION 2: \$1367

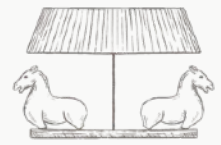
A comparable option to Soane's  
Designed by designer Sarah Bartholomew's



Inspiration Images



Rendering  
Directional 3D rendering



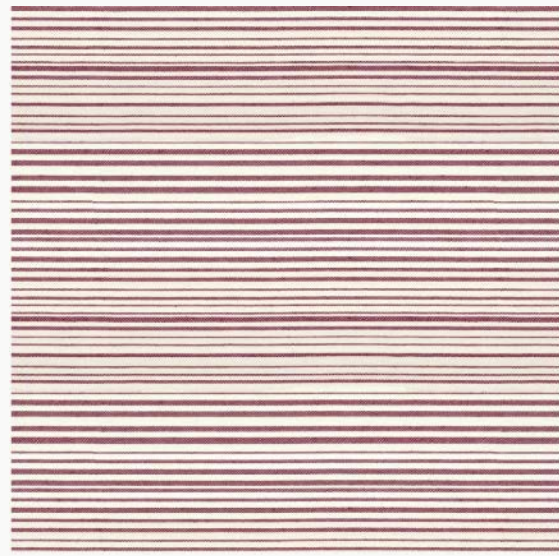
Painted Floors  
With Blue and Red  
Motif



Banquette Cushion



Hutch Skirt Fabric

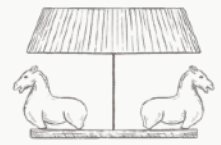


White Iron Chair  
Cushions



Custom Cabinetry Hutch with Fabric  
Skirt  
84" W x 102" H x 18" D

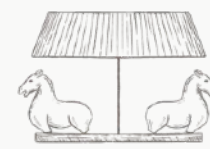




Plaster Finish Iron Chairs  
With Custom Cushion  
Will add back cushion for comfort



Overhead Light



OPTION 1: \$24,311

Custom Built to match inspiration in bleached oak by Unique Kitchens and Baths, Can do shirred skirt detail



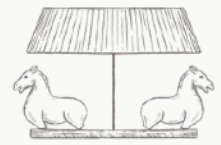
OPTION 2: \$9800

Swedish Gustavian Style 4 Door Hutch  
83"H x 41"W 17"D



OPTION 3: \$4150

French 19th Century Antique Hutch  
94.9"H x 65.36"W x 25.60"D



OPTION 1

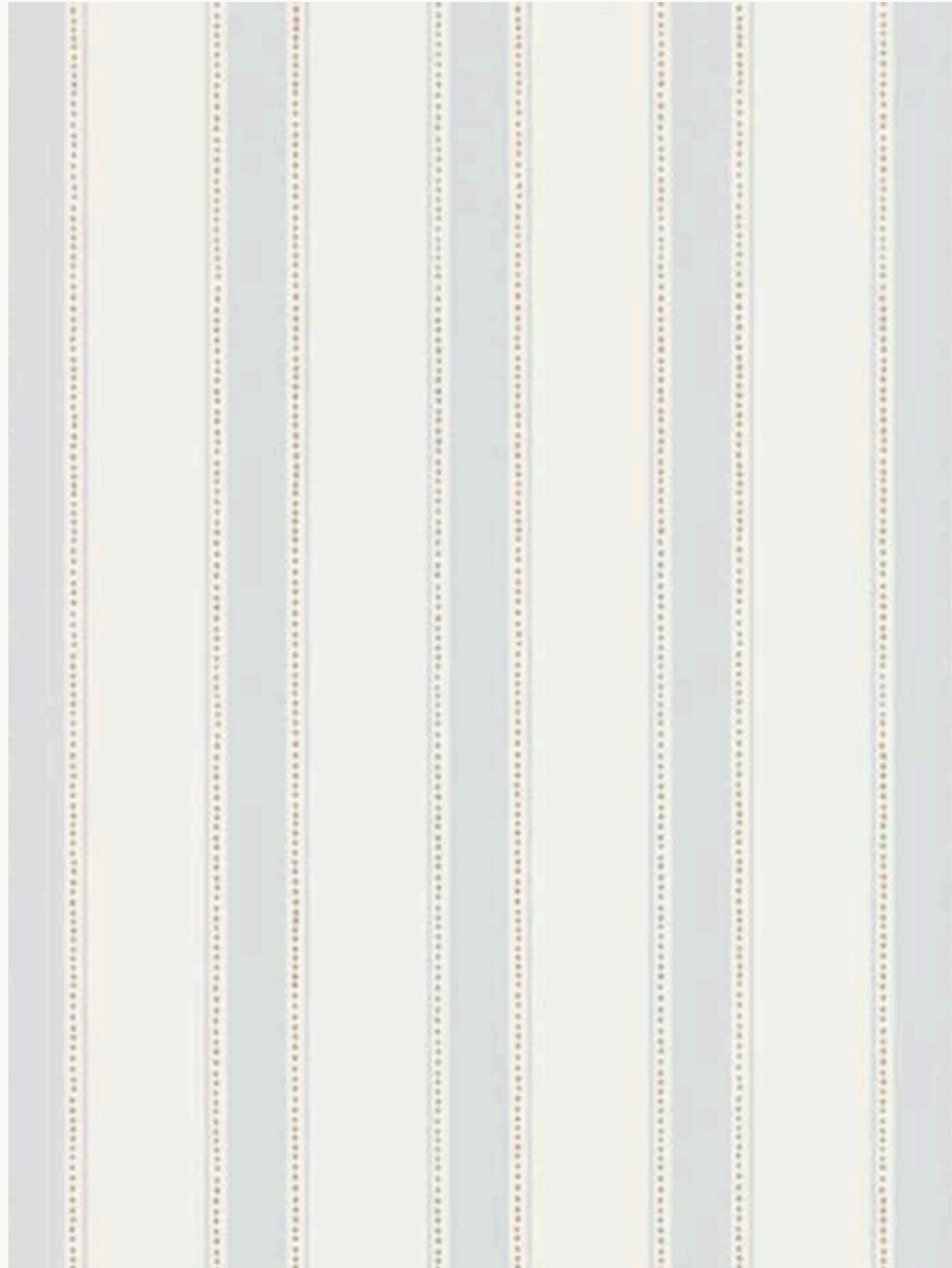
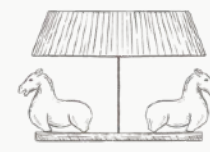
Custom Made 48" Oak Table  
Round Scalloped Table  
Can Specify Apron, and Finish

Our local maker, "Old Wood Delaware" has made many great tables for us and could do this piece



OPTION 2

Similar to the vintage table we originally proposed but was sold online during the selections process.  
47.5" with two 25.5" leaves



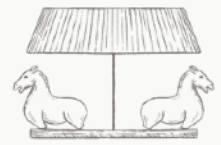
Scalamandre Gustav Wallpaper



Chick Blinds



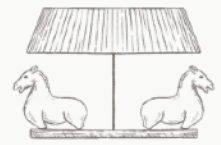
Diamond Jute Area Rug

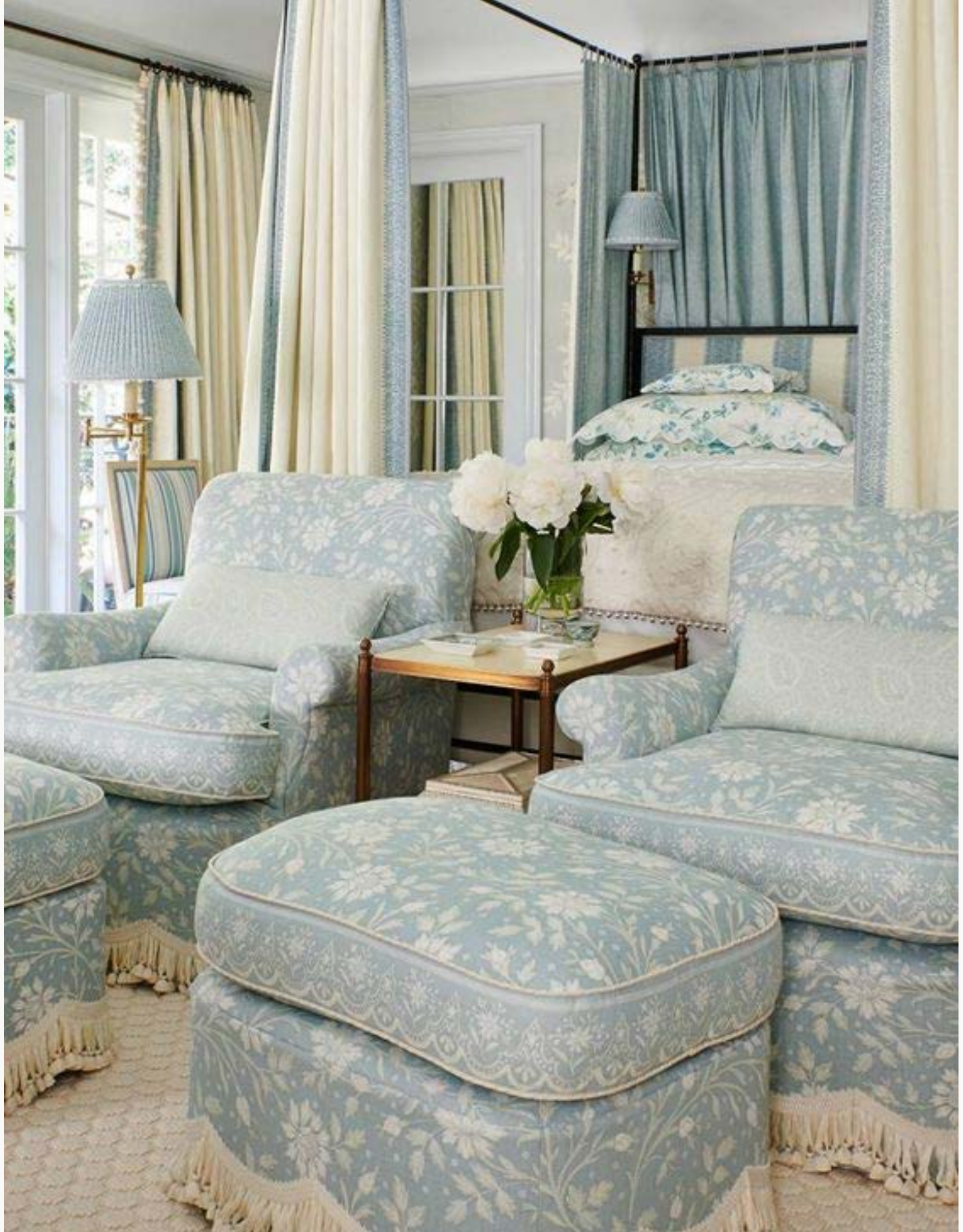
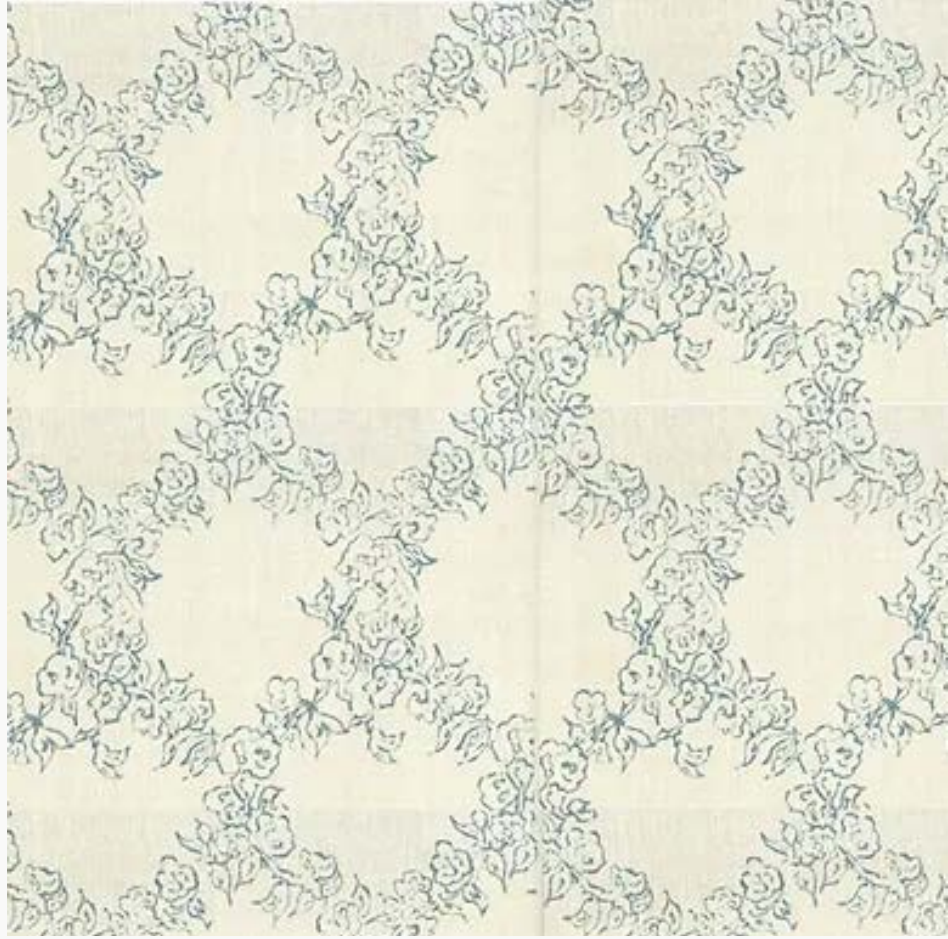
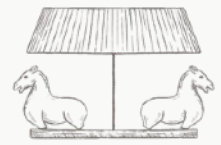


Sawkille Custom Wood Bench  
Black Finish  
Add Gingham Cushion



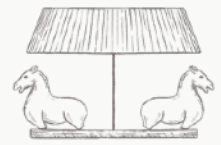
Existing Plaster Art  
Framed In Vintage Gold Frames





PRIMARY SUITE

Soft layered blues with provincial French flair



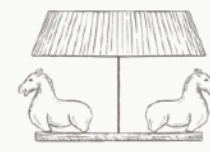
Drapes with Stripe Roman Shade



Area Rug

PRIMARY BEDROOM

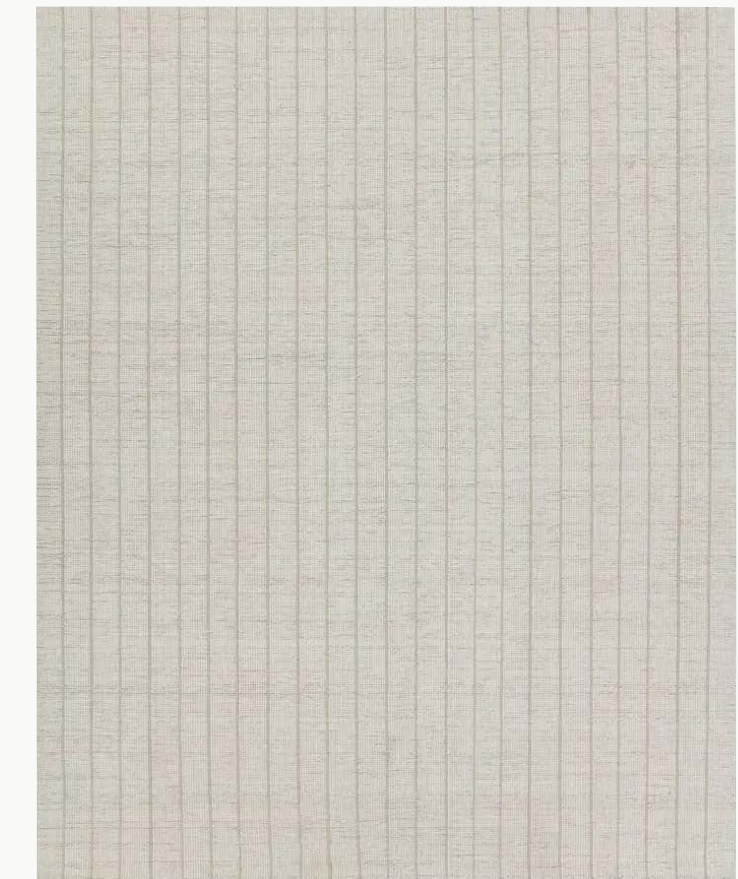
Exploded floral canopy with stripe sofa and white chairs with blue pipe



Demiurge New York  
Flora Corneila Two Tier Chandelier



Option 1  
Gustavian French Blue Painted Chest



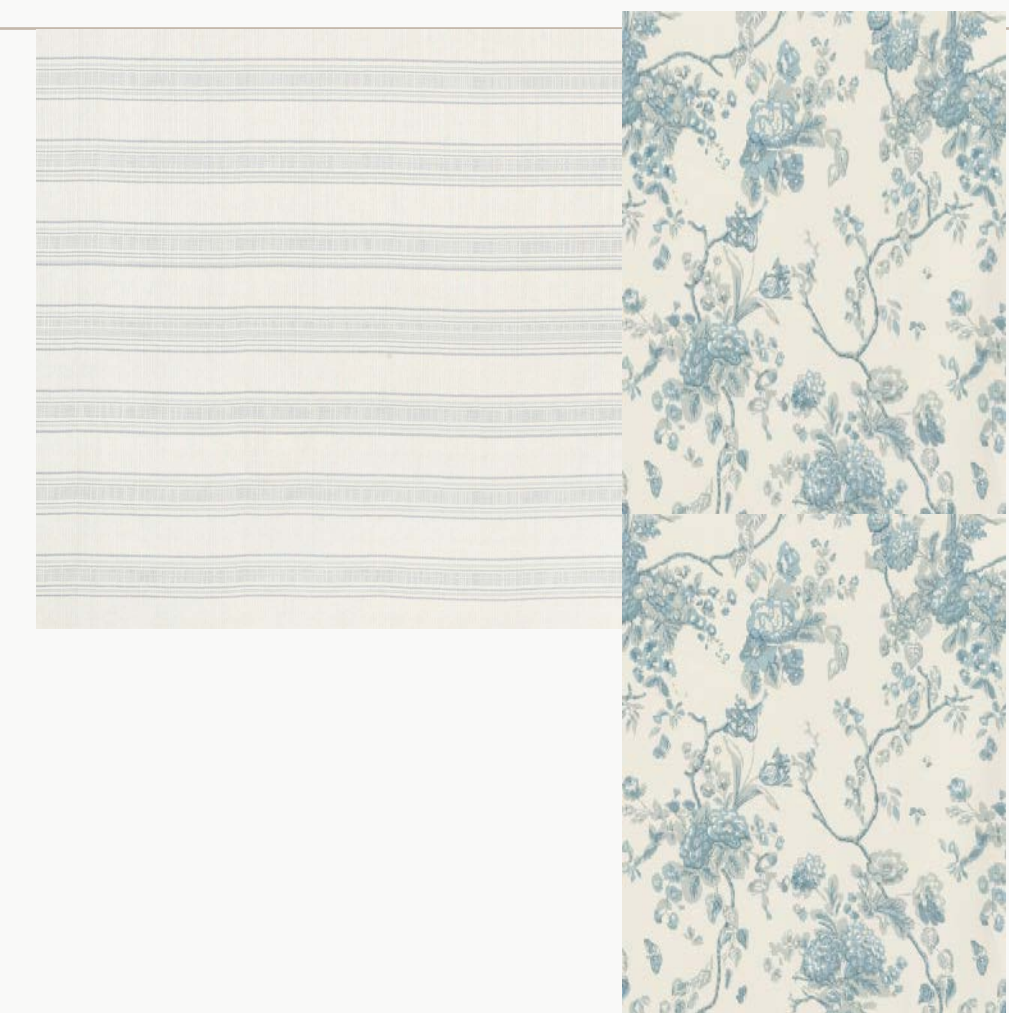
Oxford Stripe Area Rug  
Handwoven cream and light light brown wool rug



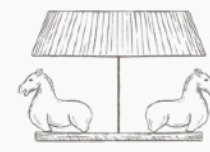
Vaughan Lamp  
White Painted Nightstands With Gray Painted Border



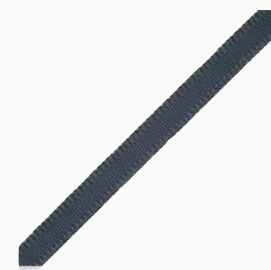
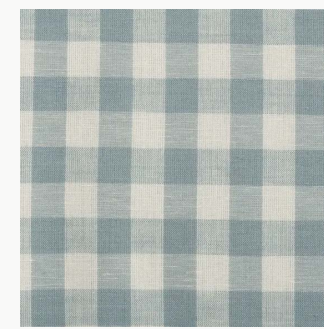
COFFEE TABLE  
Scalloped Rafia Textured



WINDOW TREATMENT  
Light Blue Stripe Roman Shade With Drapery



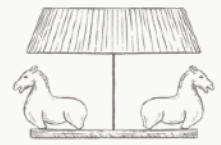
Mr and Mrs Howard Canopy Bed  
White Rod Iron Finish with Exploded Floral Canopy  
and stripe headboard



Mark D Sikes Accent Chairs  
Gingham Fabric With Dark Blue Piping

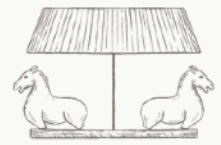


Existing Sofa  
Reupholstered in Linen and Denim Stripe Fabric



---

# PRIMARY BEDROOM COST SAVINGS OPTIONS



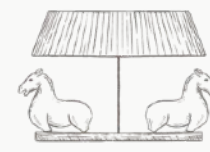
OPTION 1

Designed by Demiure in New York



OPTION 2

Designed by Visual Comfort .  
We love the style and feel that this option would not be a compromise to the design



OPTION 1: \$9513

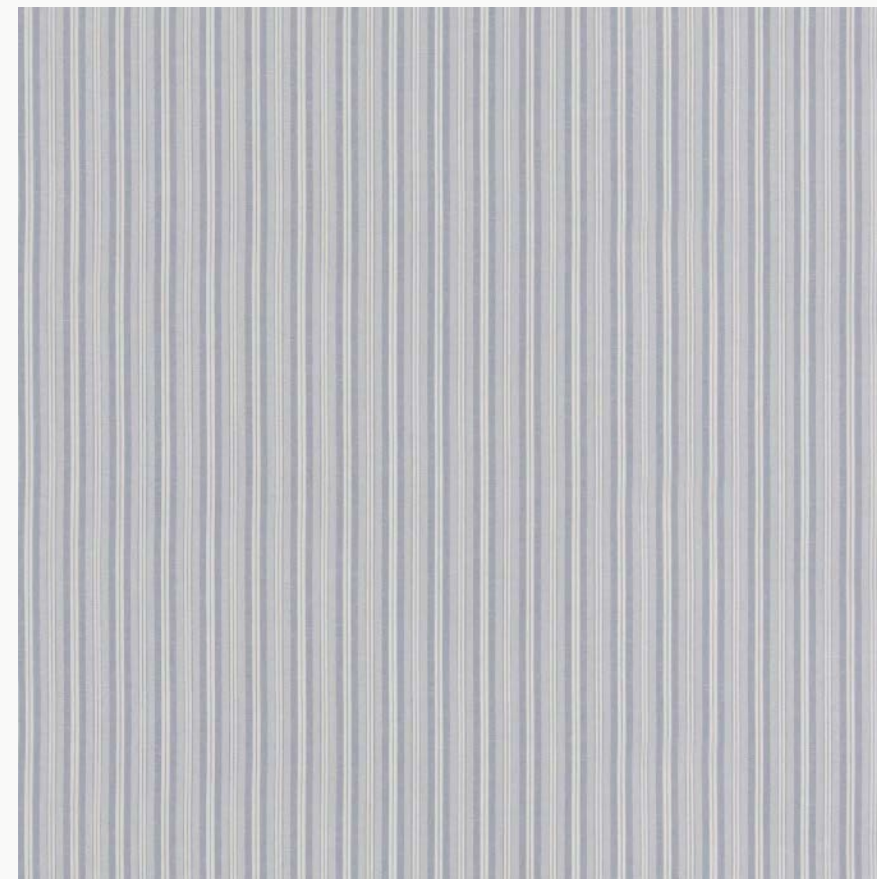
Reupholster Existing Sofa in Robert Kime:



Robert Kime Fabric in the blue stipe- you have the sample in green that we looked at together and loved. Nothing quite like it

OPTION 2: \$5762

Reupholster Existing Sofa in cost saving fabric

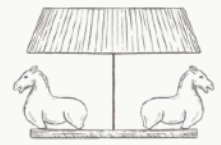


OPTION 3: \$950

Don't Reupholster Full Sofa  
Large lumbar in Robert Kime Stripe



\$950



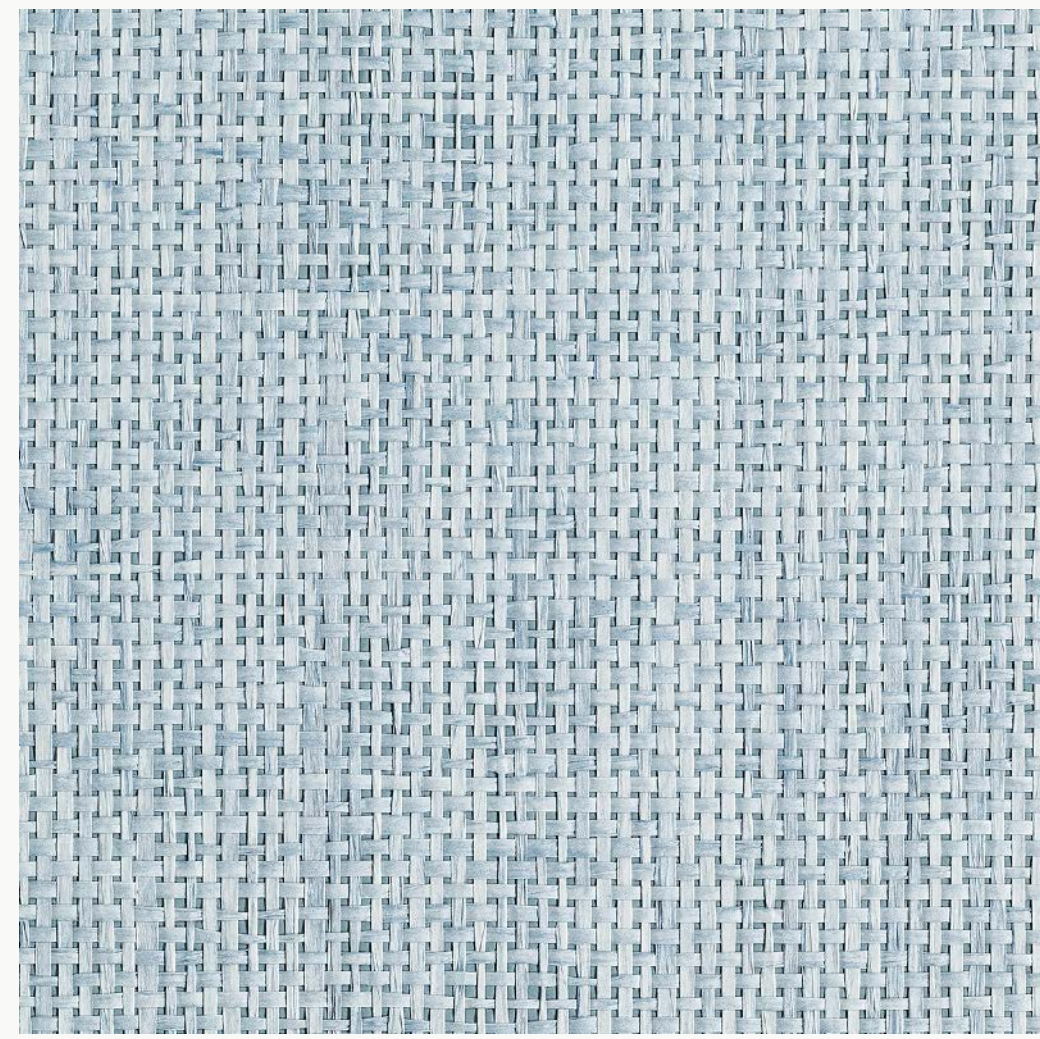
WALLS

OPTION 1: \$18,500



The Vale Wallpaper (sample we reviewed)

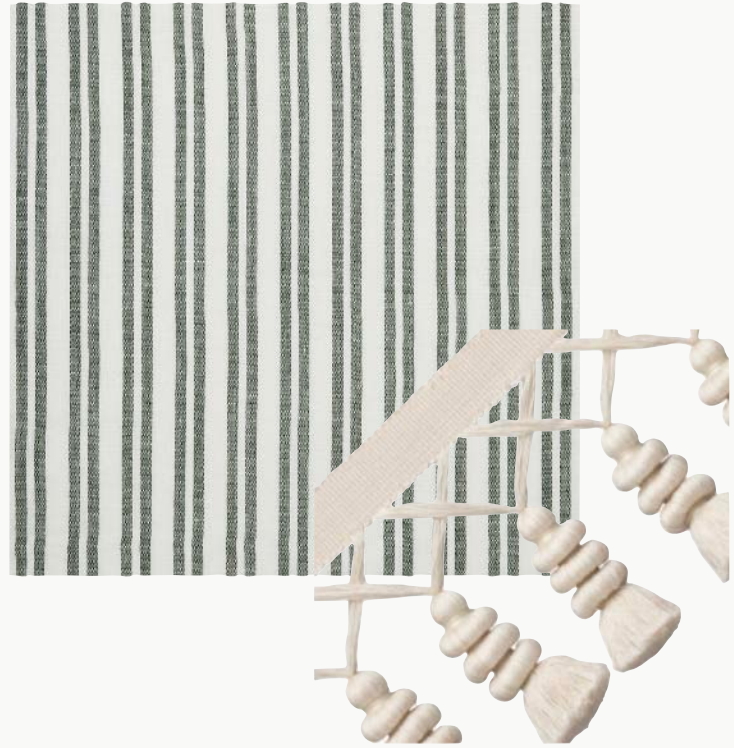
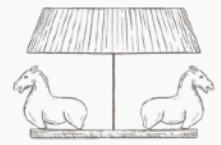
OPTION 2: \$8424



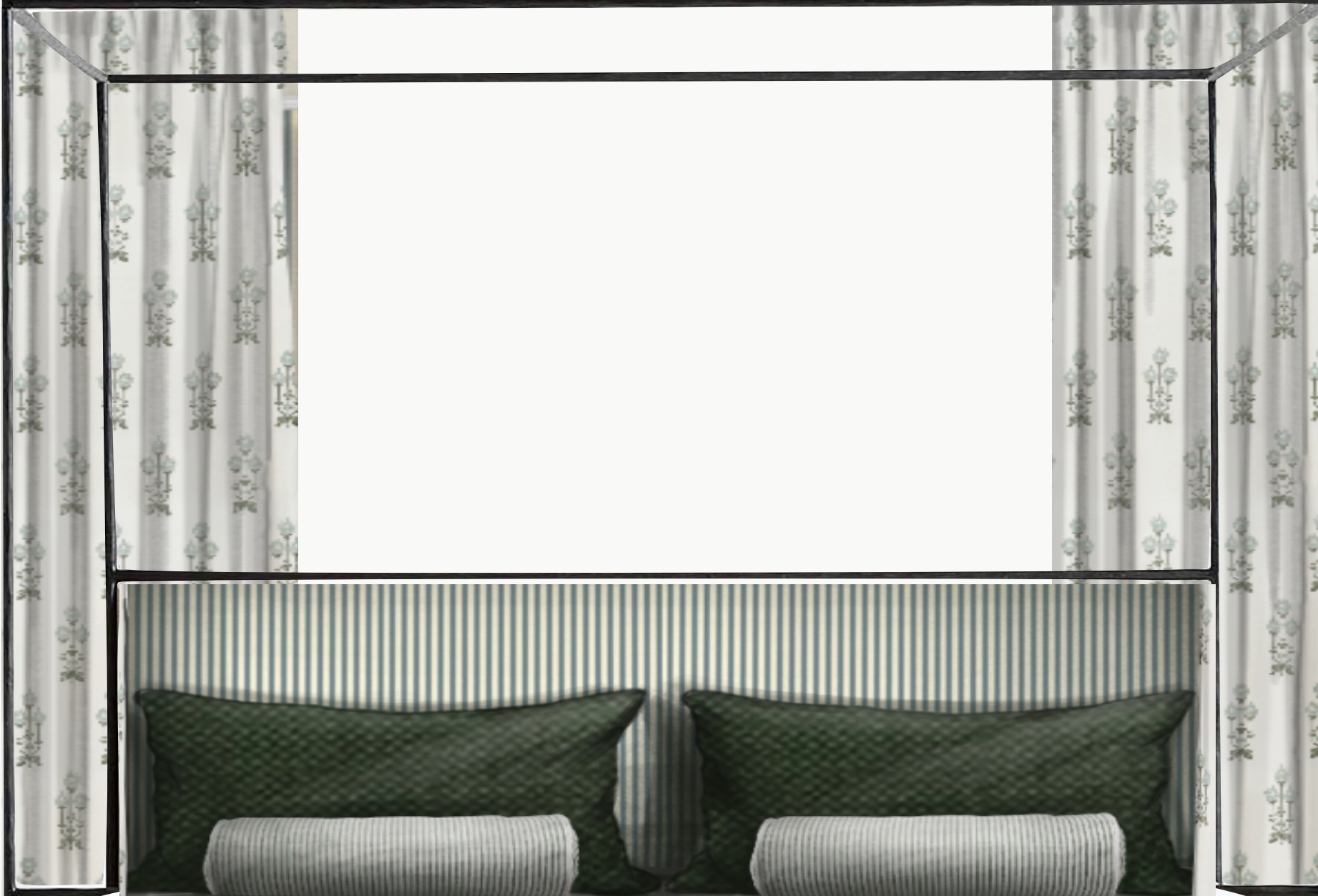
Cost Alternative (Phillip Jeffries Fuji Weave Fresh Stream) Very similar color in a seamless weave instead of linen with sheen



Inspiration

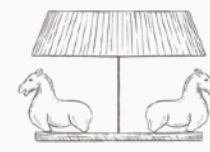


Relaxed Roman Shade  
in a Sheer  
Stripe with a Tan Tassel



BEDROOM #1

Layers of Green, Cream & Rattan Texture



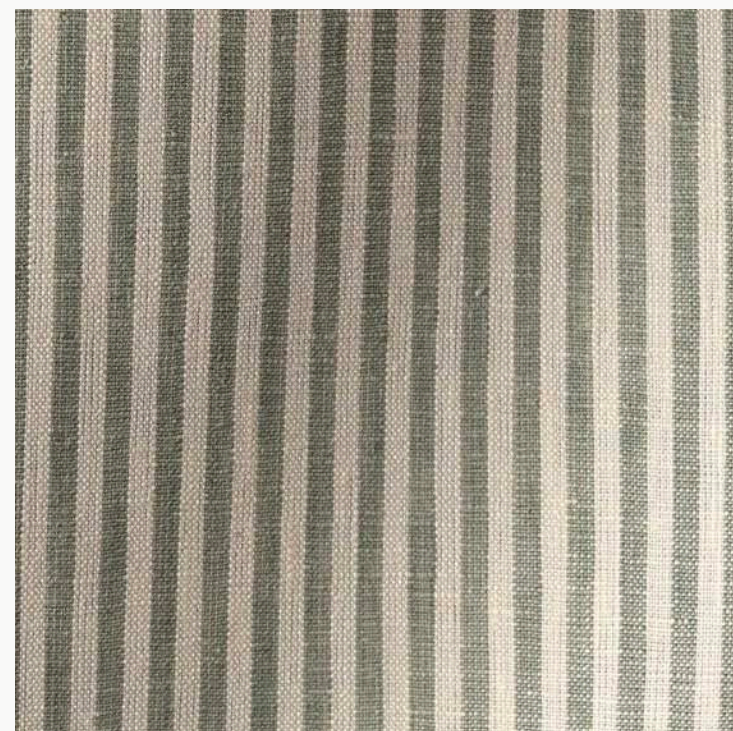
Existing Bed



Modern History Nightstands  
White Painted Nightstands With Gray Painted Border



Rattan Table Lamp



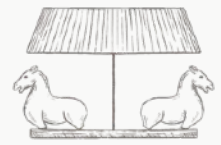
Upholstered Bed Fabric & Back Curtains



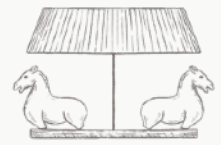
Existing Dresser & Lamp with New Shade



Existing Bench  
Reupholstered In Green Fabric



# BEDROOM 1 COST SAVINGS OPTION



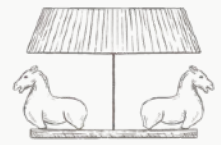
Wool and Jute Blend Woven Rug  
(Sample shown)  
\$3570



OR

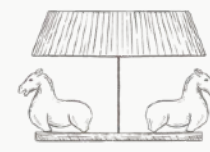


Braided Jute: \$1698



SOPHIA'S ROOM

Canopy hanging from ceiling inspiration



Canopy Bed From Ceiling  
Sheer Canopy



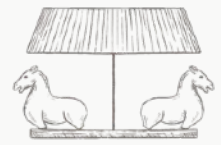
White Glazed Table Lamp



Crystorama Paris Chandelier  
Antique White metal Finish



Floral Wallpaper



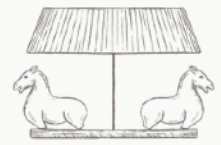
OPTION 1

28"W x 20"D x 28"H  
Smaller in width and height than Option 2



OPTION 2

35w x 20d x 35h  
Designed by Modern History.  
If Sophia would like her bed very low to the floor than this option would not work



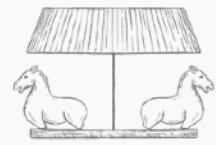
OPTION 1

A more detailed area rug with an erased medallion and super soft underfoot feel



OPTION 2

Solid Ivory with a soft velvety feel

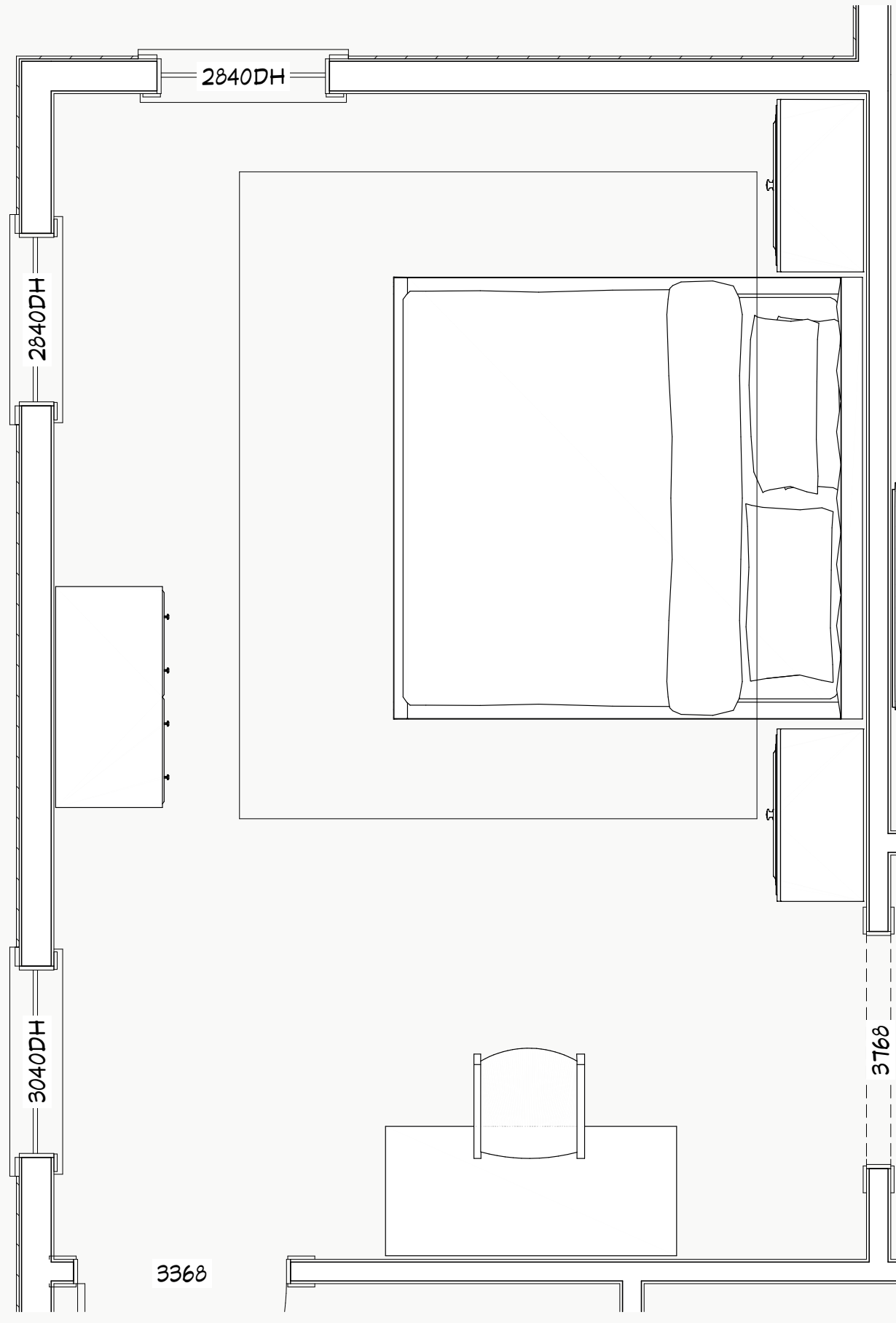
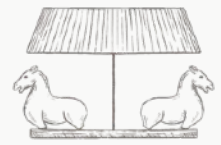


Pattern Roman Shade with Matching Dark Blue Pull Backs



BEDROOM #3 OPTION 1

Repeating Pattern on Headboard Cover, Chair Seat, Roman Shade, Pillows & Lamp Shades



Floor Plan

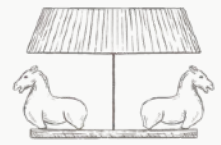


All Over Pattern Room Inspiration

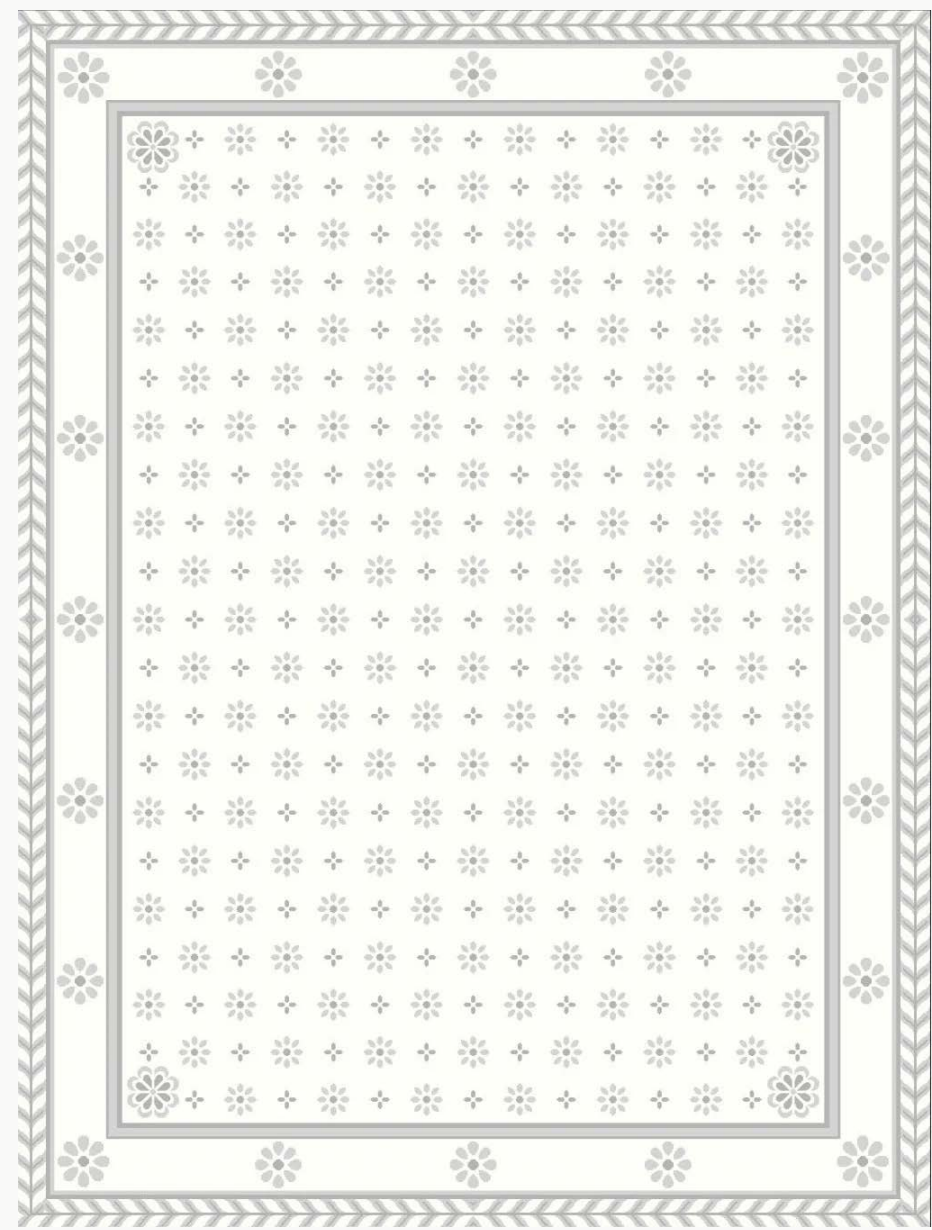
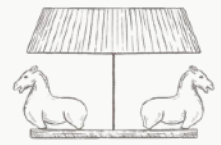


Striped Bed with Patterned Cover

Green stripe upholstered bed with fabric cover that ties



Desk Option 3  
Repaint Existing, Painting Only the Black  
Areas a Lighter Cream Color



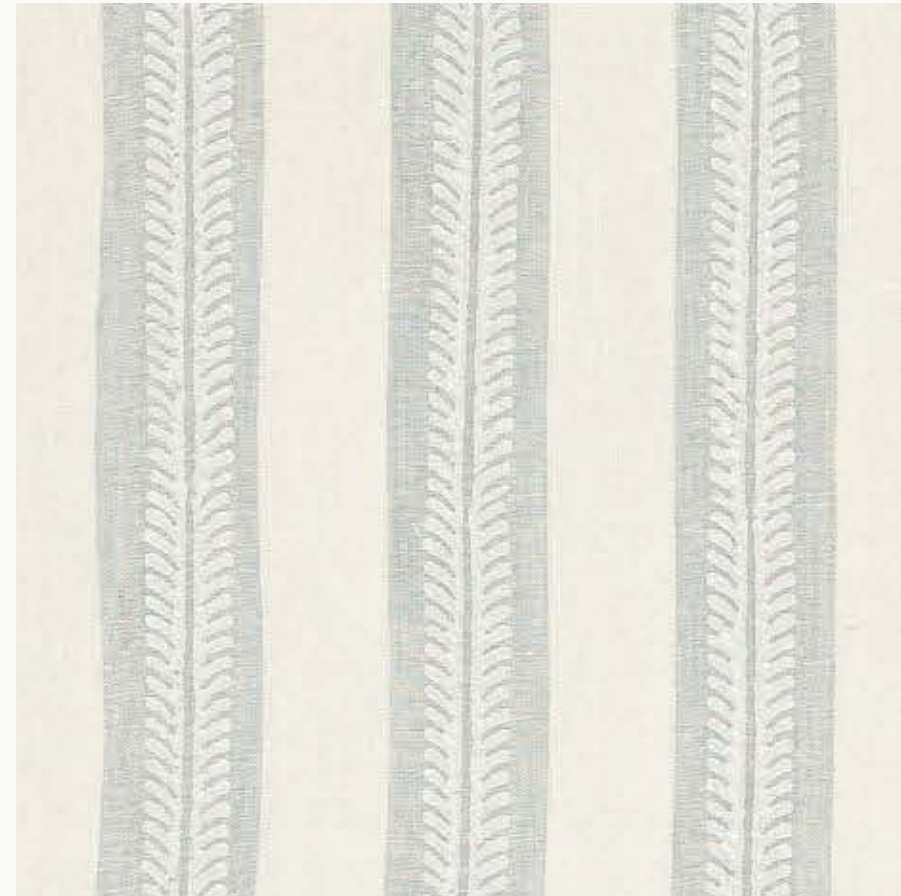
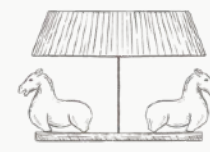
Patterned Rug



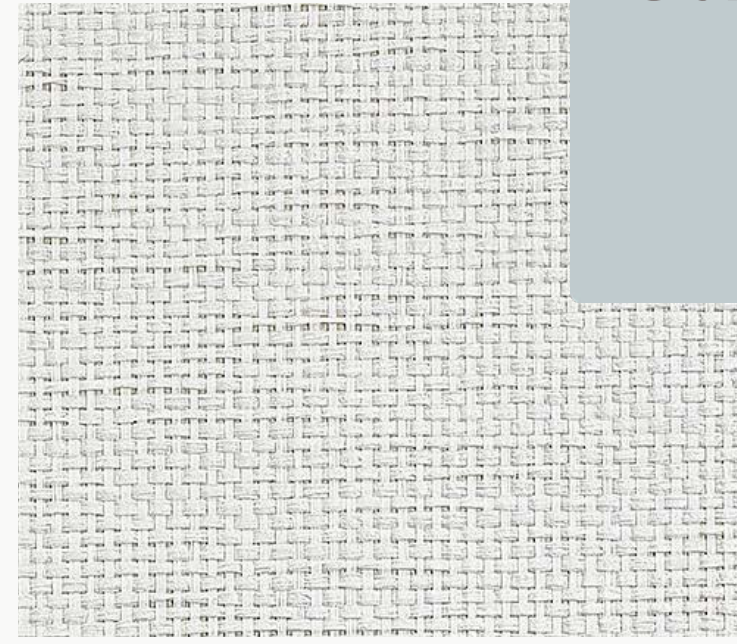
BM  
Gentle Gray  
Trim

BEDROOM #4

Stripe quarter canopy in soft light blue leaf motif



Canopy Fabric



BM Gentle Gray Trim

Textured White Wallcovering With Light Blue Trim



Existing Dresser



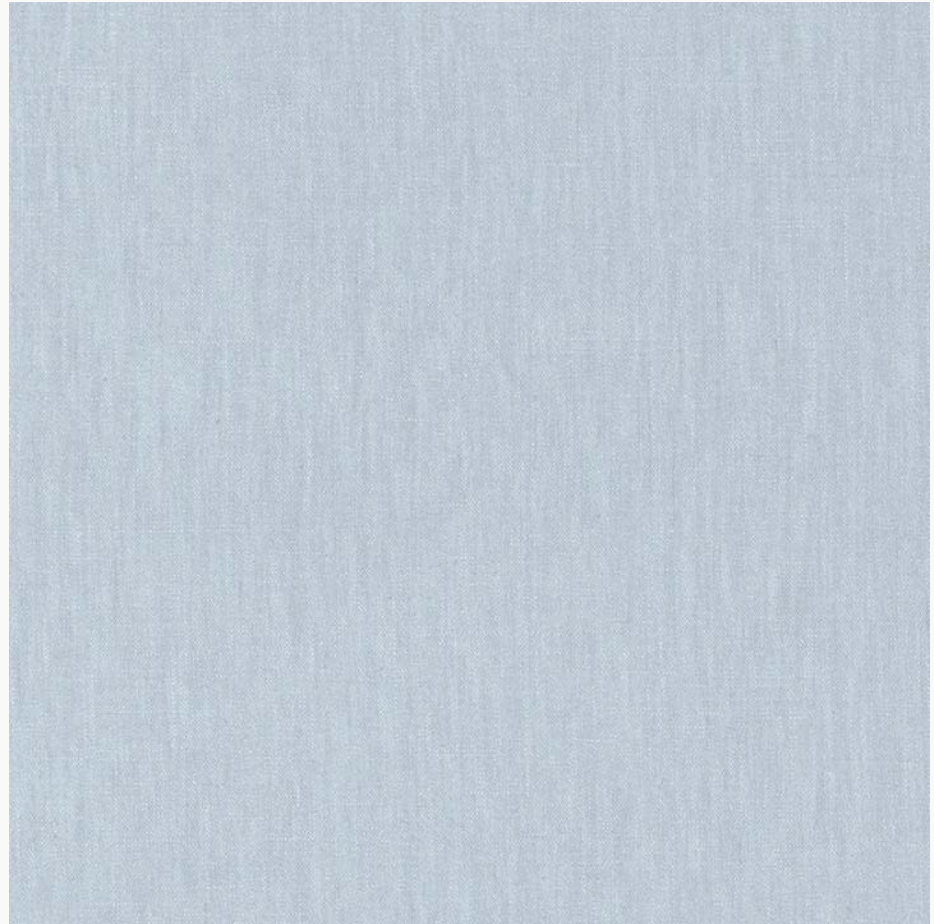
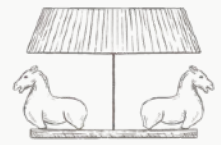
Painted dresser is Soft Gray Finish (Rendering doesn't accurately show finish)



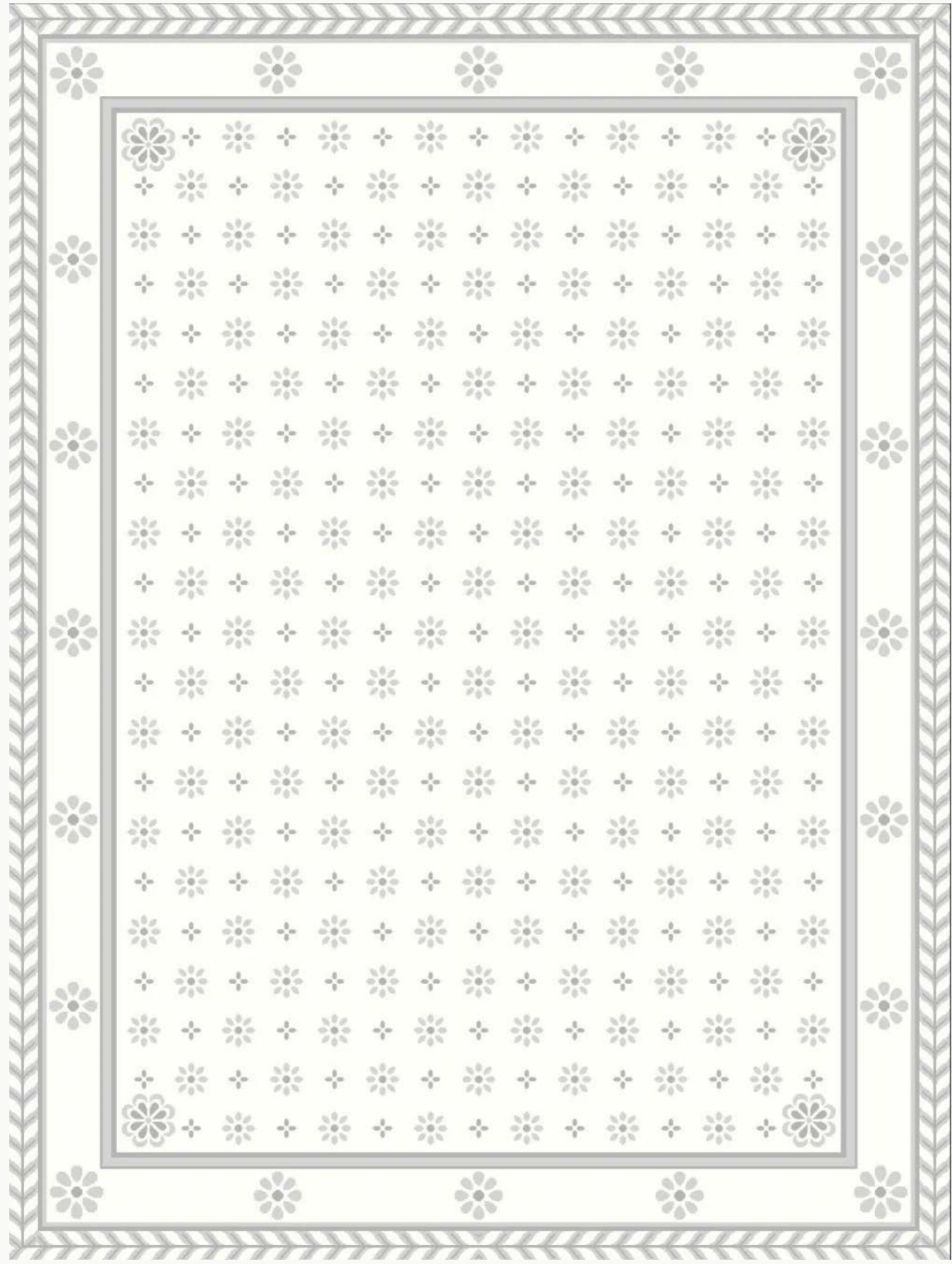
Small Circular Ottoman Seat with Skirt in Light Blue Glazed Linen



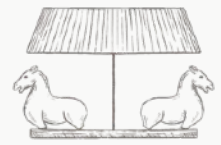
Pleated Shade and Brass Wall Sconces



Light Blue Drapes



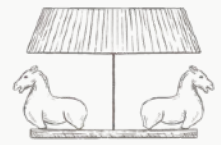
Floral Motif and Border Area Rug in Pantone matched blue



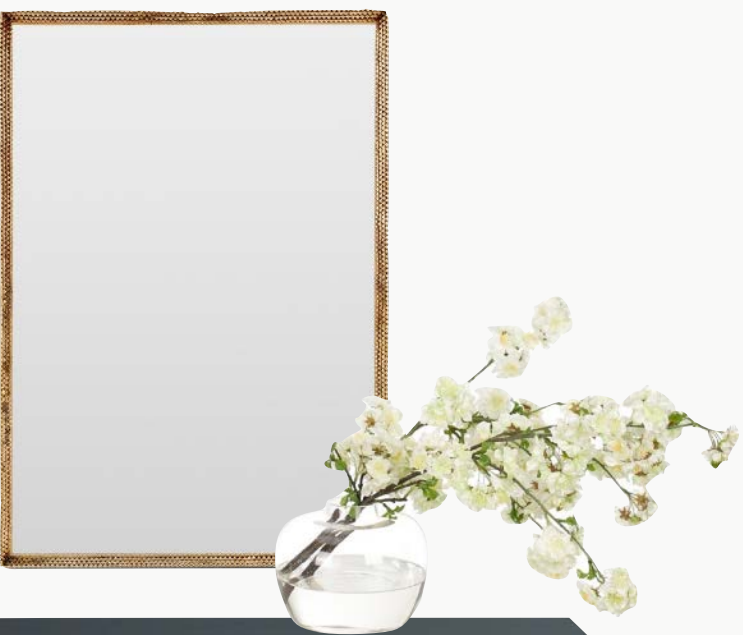
DELFT ROOM

LEVELS OF BLUE, MURAL WALLS, DARK WOOD ACCENTS AND THE TINIEST POP OF RED





Window Treatment Inspiration

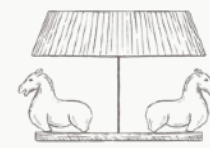


Accent Chest With Gold Mirror



Area Rug





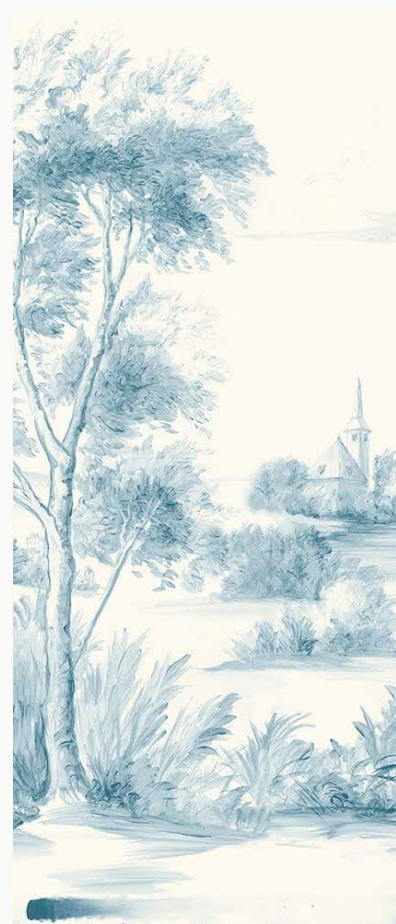
17 CENTURY CHEST  
Navy Finish



AREA RUG  
Natural Jute and Wool



MIRROR  
Gold Embellished Metal



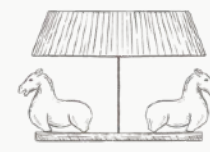
SUSAN HARTER MURAL  
Delft Blue



WINDOW TREATMENTS  
White Roman Shades with Navy Tape



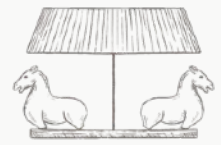
SKIRTED SLIPPER CHAIR  
Blue piping with gingham pillow



WOOD DETAILED BED  
Rattan Backing on Headboard

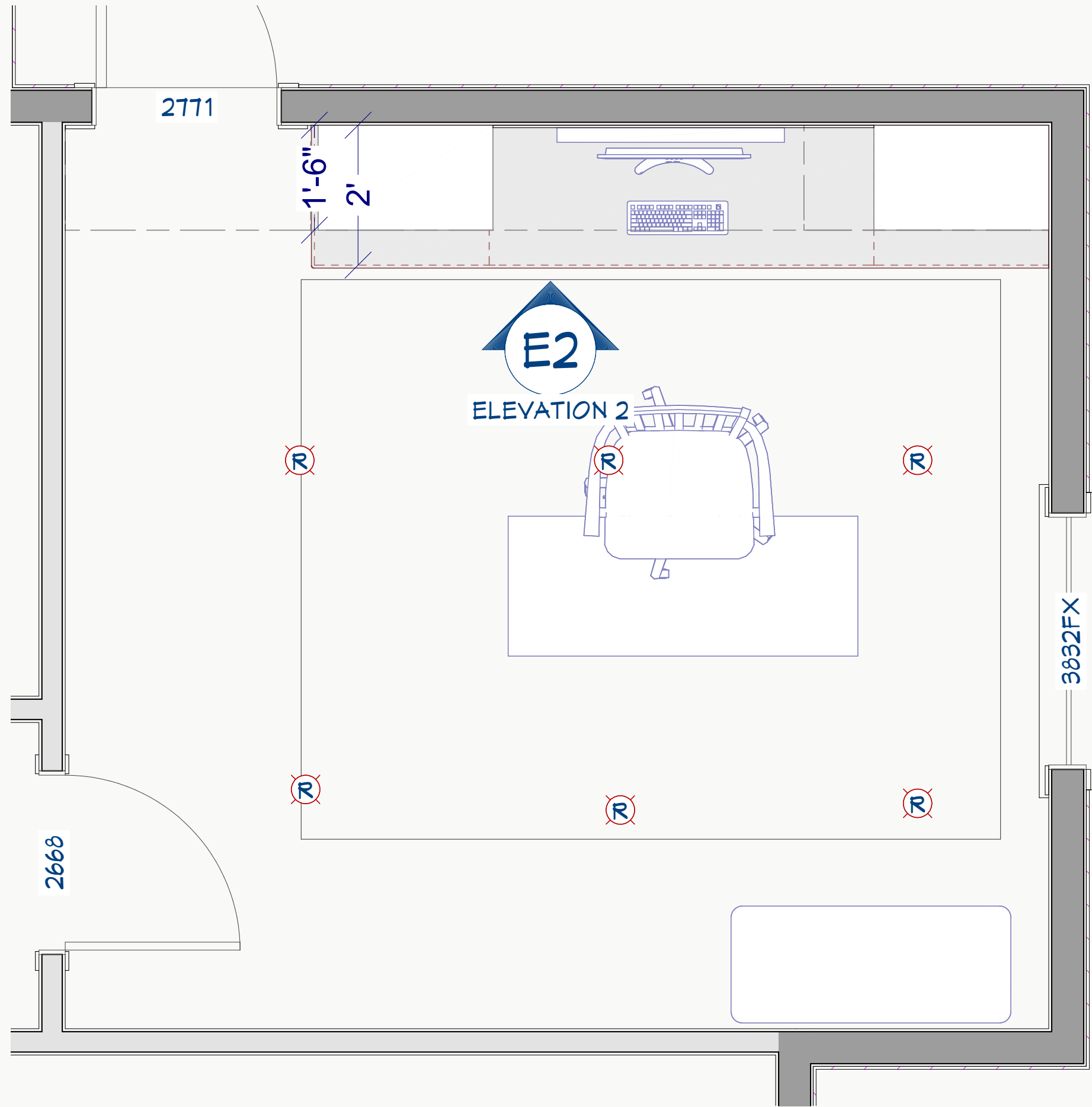
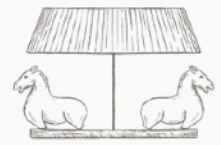
LAQUER NIGHTSTAND WITH TASSELS  
Cream Finish with Blue Tassels

JAMIE YOUNG MARBLE LAMP BASE  
With custom blue gingham shade

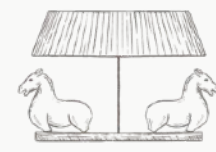


TITLE OR HEADLINE

Body Copy / Description



Office Built-Ins  
Symmetrical Built-Ins with desk off center in the room



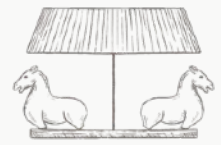
Reeded Drawer Desk in Painted Cream



Upholstered Wood Chair

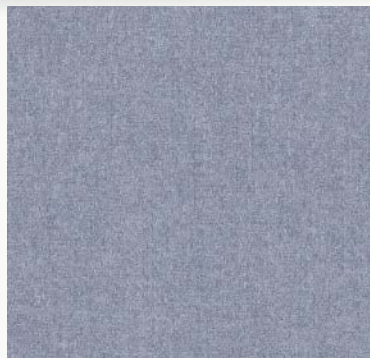


Tan Wool Low Pile Rug



BM  
Montpelier  
Built-Ins

New Cozy Braided Rug Under  
Sectional



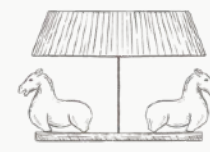
Round Upholstered Ottoman  
With Tray



Existing Art Work & Pool  
Cue Organizer on Walls



BASEMENT GAME / TV ROOM



CR LAINE ROUND OTTOMAN

43" Circle in Performance Fabric

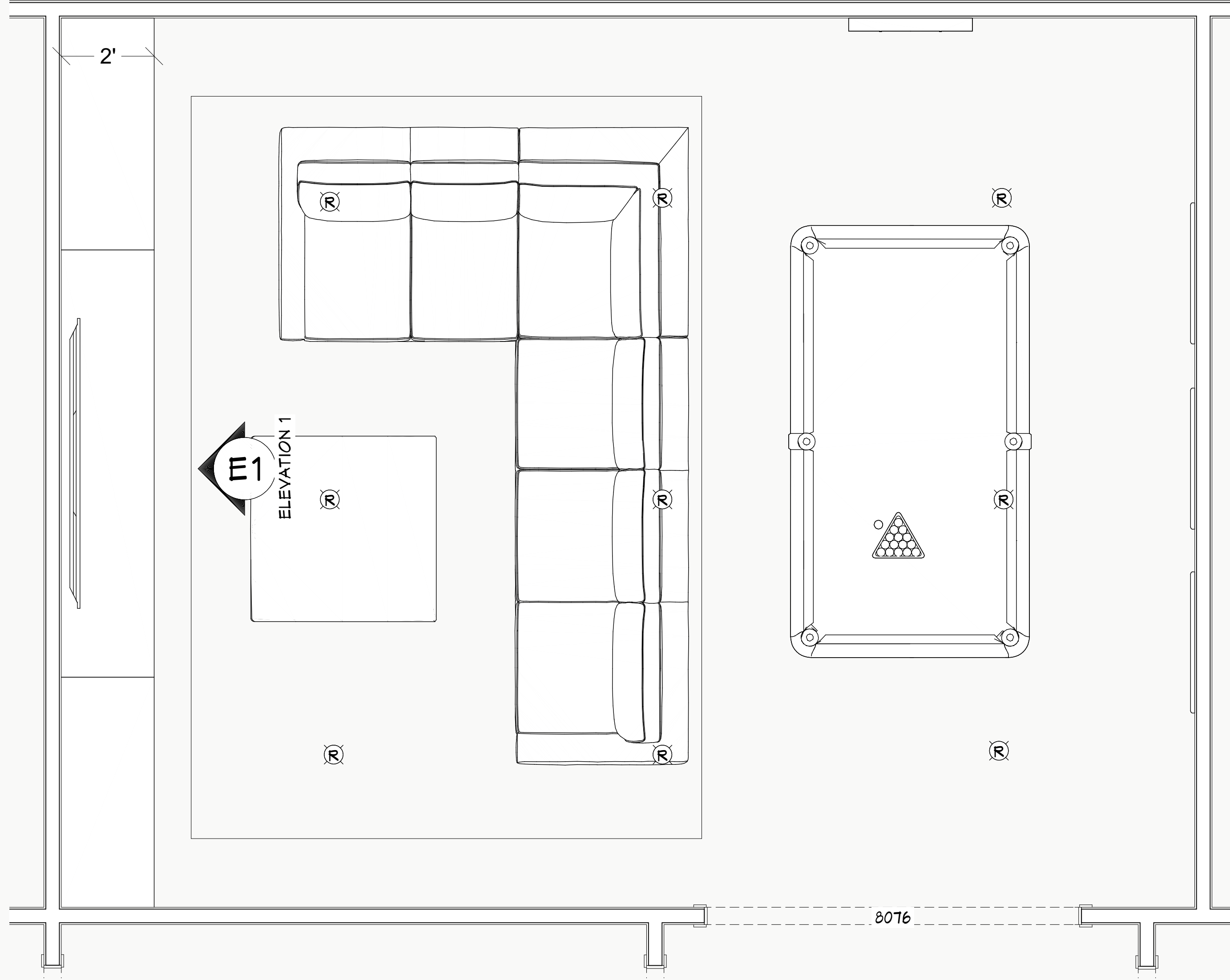
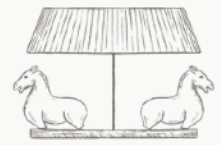


REUPHOLSTER CURRENT OTTOMAN

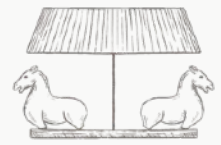
Can select a performance fabric



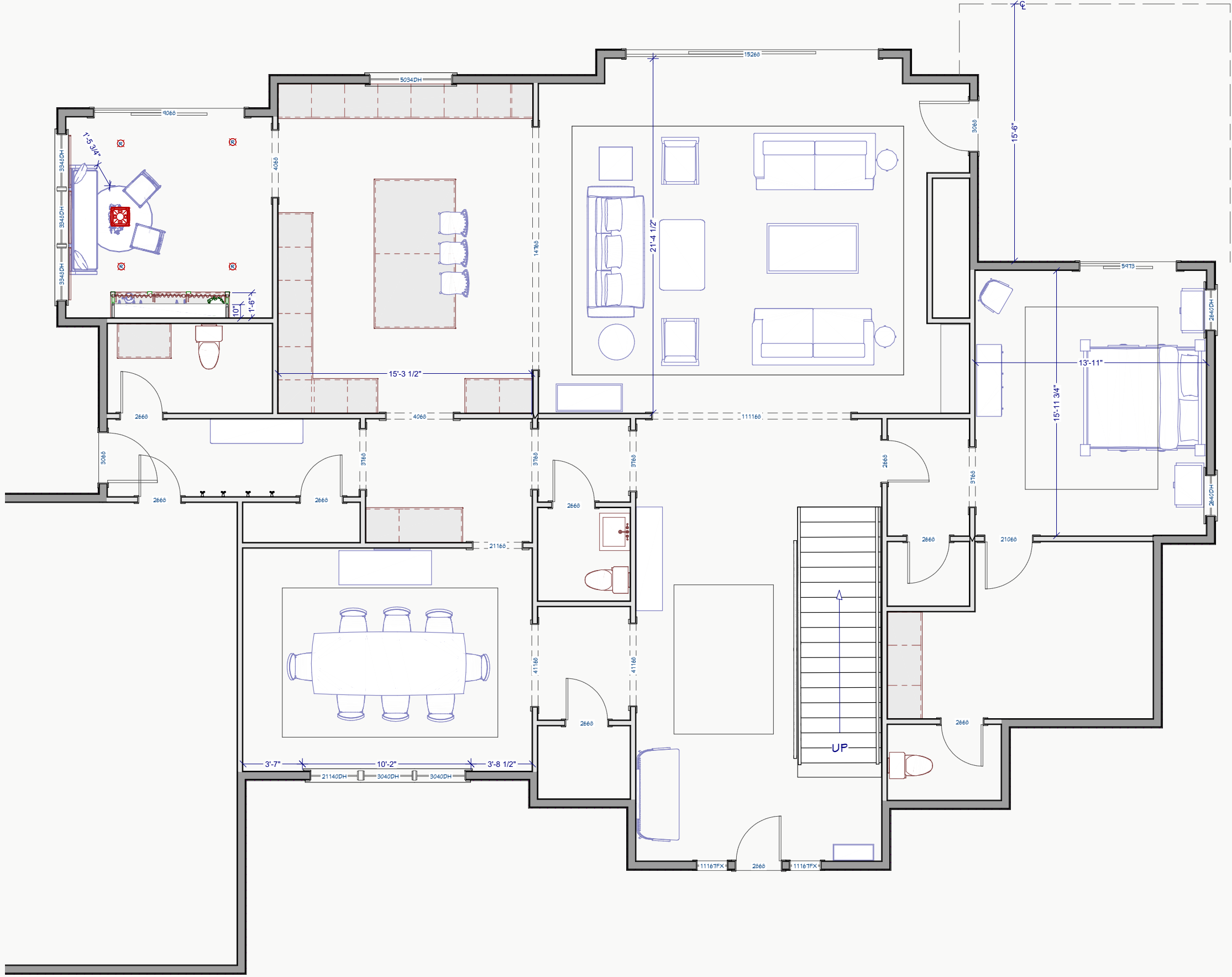
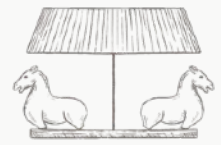
Performance Fabric Selection



FLOOR PLAN



BASEMENT RENDERING



SECOND FLOOR

